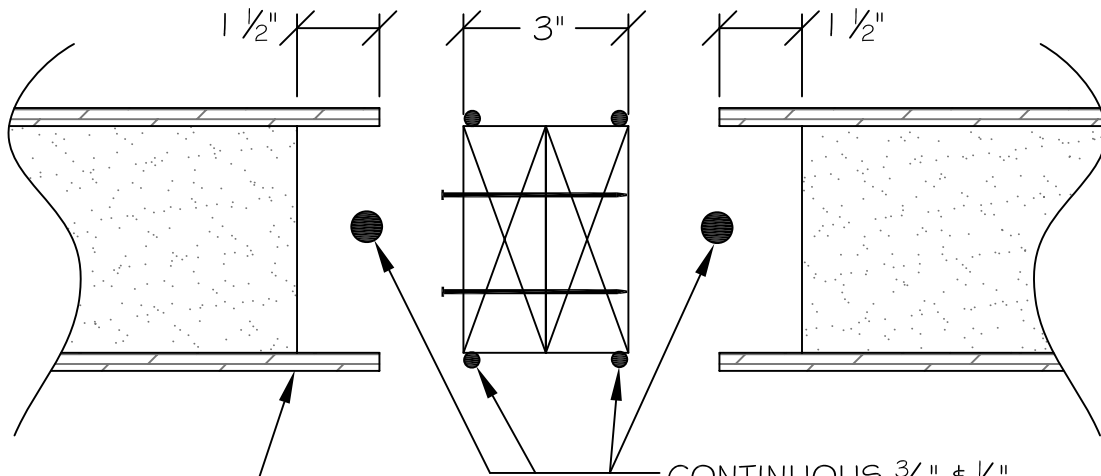


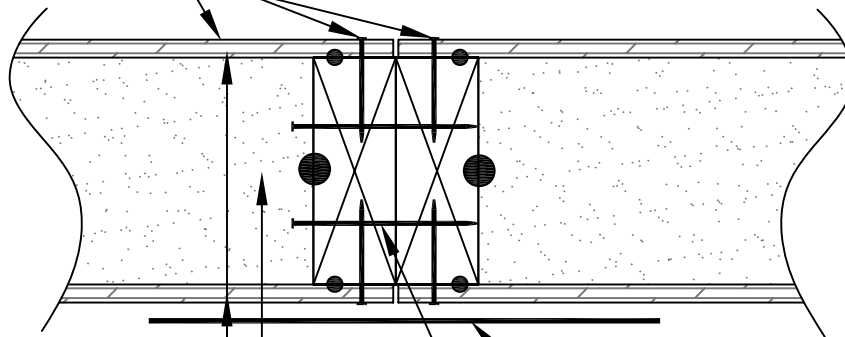
PRE-ASSEMBLED VIEW



CONTINUOUS $\frac{3}{8}$ " $\# \frac{1}{2}$ "
PREMIER MASTIC
TYPICAL EACH SIDE

EXTREME WALL,
ROOF, OR
FLOOR PANEL

$\#8 \times 1 \frac{1}{2}$ " SCREWS @ 8" O.C. OR
8d NAILS @ 6" O.C. BOTH SIDES
TOP & BOTTOM (U.N.O.)



$\frac{7}{16}$ " O.S.B. SKINS ON
BOTH SIDES, TYPICAL

EXPANDED
POLYSTYRENE CORE

SIP TAPE ON (WINTER)
WARM SIDE OF PANEL

$\#9 \times 3$ " SCREWS OR 16d
NAILS @ 12" O.C. IN 2
ROWS STAGGERED W/
PREMIER MASTIC OR
SUBFLOOR ADHESIVE
BETWEEN 2x MEMBERS

ASSEMBLED VIEW

SECTION
NOT TO SCALE

* DETAIL COURTESY OF PREMIER BUILDING SYSTEMS

DETAIL TITLE : DOUBLE 2x LUMBER CONNECTION

DETAIL NO. : EP-105

PAGE NO. : 1 - 5

UPDATED : 2/5/2009

Extreme Panel
Technologies, Inc.
QUALITY EFFICIENT BUILDING SYSTEMS