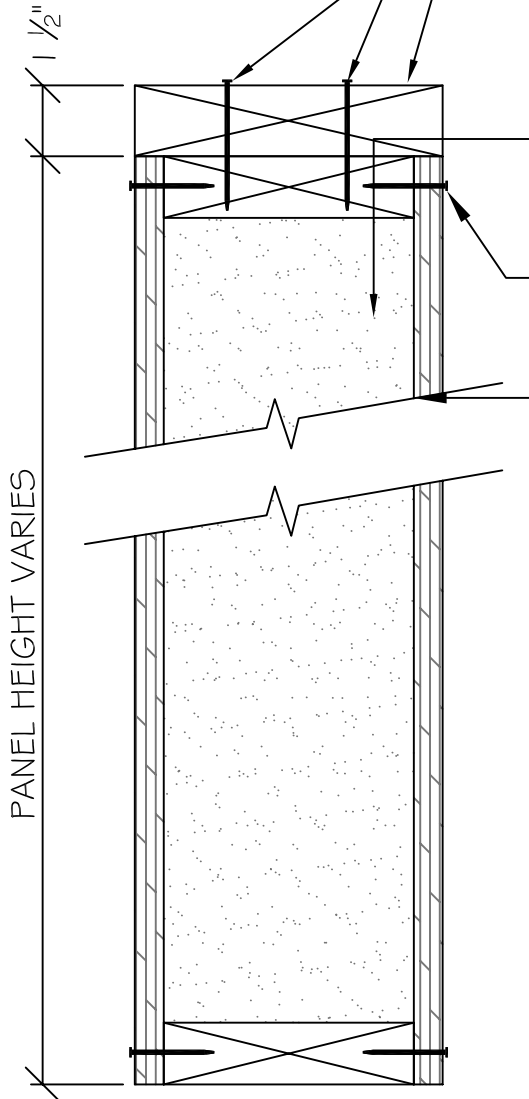


#9x 3" SCREWS OR 16d NAILS @ 12" O.C. IN 2 ROWS STAGGERED U.N.O.

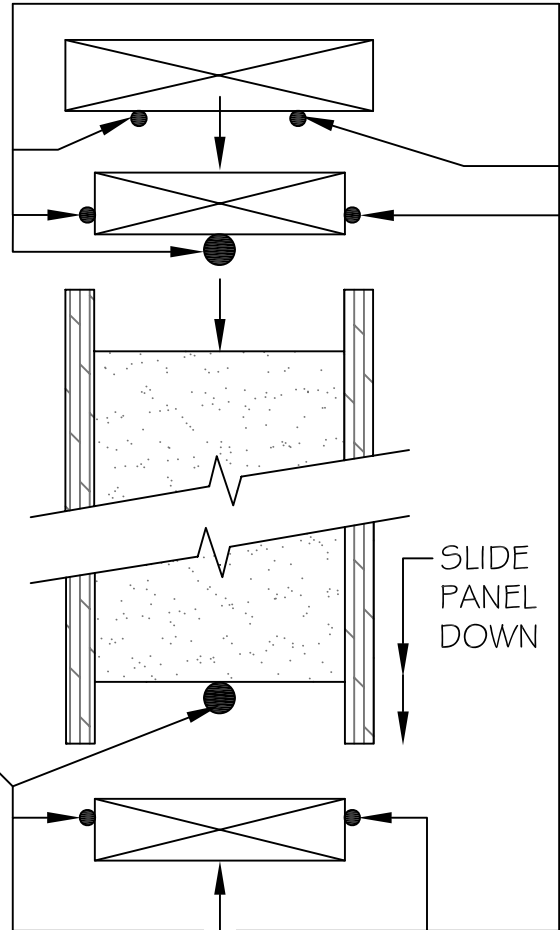
STANARD 2x LUMBER, OSL RIMBOARD OR LVL MATERIAL RIPPED TO OVERALL WIDTH OF PANEL. MAY BE USED TO INCREASE WALL HEIGHT OR TO INCREASE POINT LOADING CAPACITY. SEE POINT LOAD CHART.



THE FOAM IS HELD BACK 1/2" TO ALLOW THE TOP PLATE TO SIT FLUSH WITH THE TOP OF THE PANEL

#8x1/2" SCREWS @ 8" O.C. OR 8d NAILS @ 6" O.C. BOTH SIDES, TOP AND BOTTOM (U.N.O.)

EXTREME PANEL WALL



CONTINUOUS 3/8" x 1/2" PREMIER MASTIC IS TO BE APPLIED TO THE TOP AND BOTH SIDES OF THE TOP AND SILL PLATES AND BETWEEN TOP PLATE AND TOP SHIM PLATE

SILL PLATE IS TO BE FASTENED IN PLACE W/ #9x3" SCREWS OR 16d NAILS @ 12" O.C. IN 2 ROWS STAGGERED BEFORE PANEL INSTALLATION

SECTION  
NOT TO SCALE

DETAIL TITLE : TOP SHIM PLATE CONNECTION

DETAIL NO. : EP-111

PAGE NO. : 1 - 11

UPDATED : 2/5/2009

**Extreme Panel**  
Technologies, Inc.  
QUALITY EFFICIENT BUILDING SYSTEMS