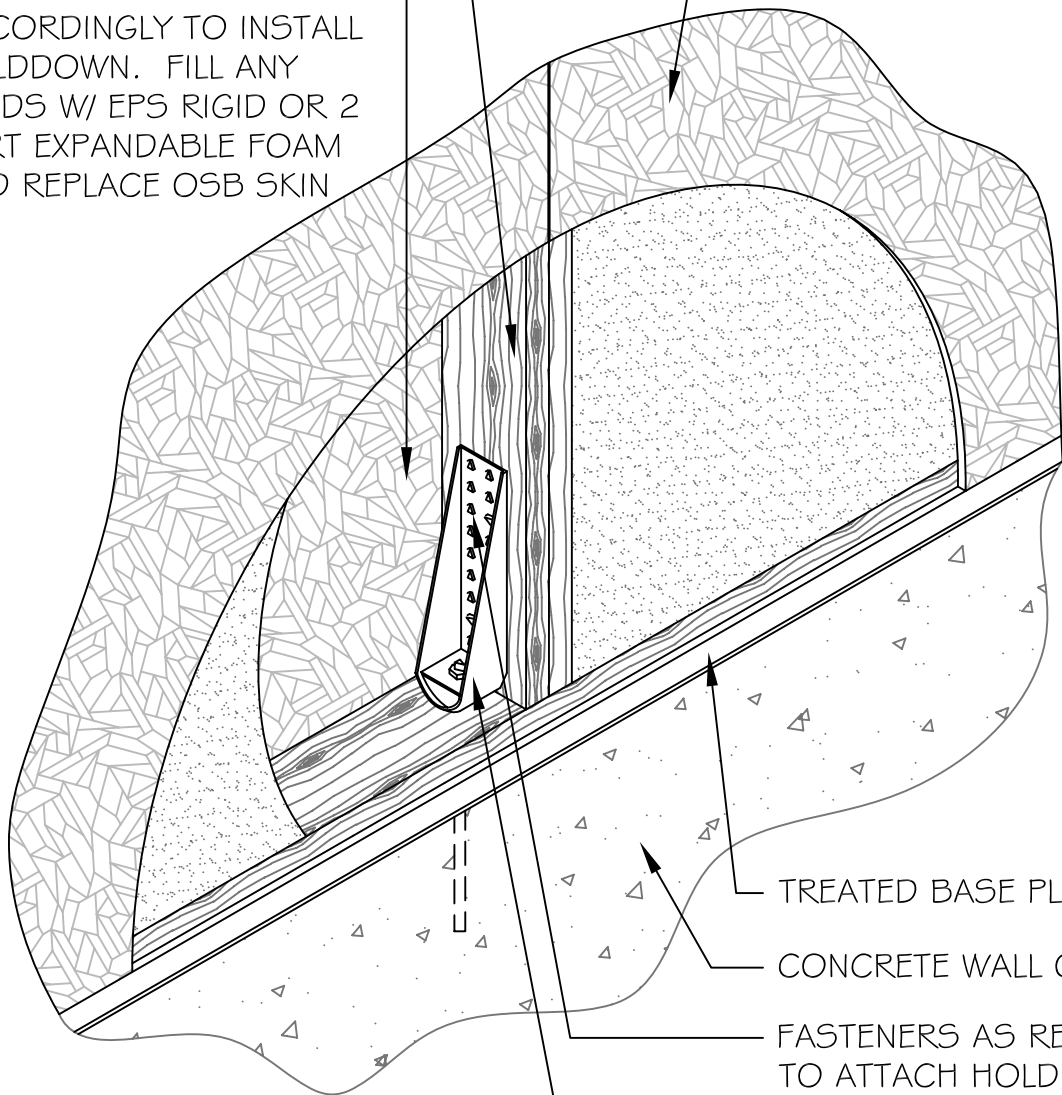


TENSION / COMPRESSION
POST IN END OF SHEAR
WALL AS REQUIRED BY
ENGINEERING

FIELD CUT PANEL
ACCORDINGLY TO INSTALL
HOLDDOWN. FILL ANY
VOIDS W/ EPS RIGID OR 2
PART EXPANDABLE FOAM
AND REPLACE OSB SKIN

EXTREME WALL PANEL



TREATED BASE PLATE

CONCRETE WALL OR SLAB

FASTENERS AS REQUIRED
TO ATTACH HOLDDOWN
TO POST

HOLDDOWN ANCHOR
PER ENGINEERING

NOTE:
VERIFY W/ ENGINEER IF DOUBLE SILL
PLATE W/ TWO ROWS OF #8x1 1/2" SCREWS
OR 8d NAILS @ 4" O.C. STAGGERED ON
EACH SIDE IS AN ACCEPTABLE ALTERNATE

SECTION
NOT TO SCALE

* DETAIL COURTESY OF PREMIER BUILDING SYSTEMS

DETAIL TITLE : HOLDDOWN CONNECTION

DETAIL NO. : EP-211

PAGE NO. : 2 - 11

UPDATED : 2/5/2009

Extreme Panel
Technologies, Inc.
QUALITY EFFICIENT BUILDING SYSTEMS