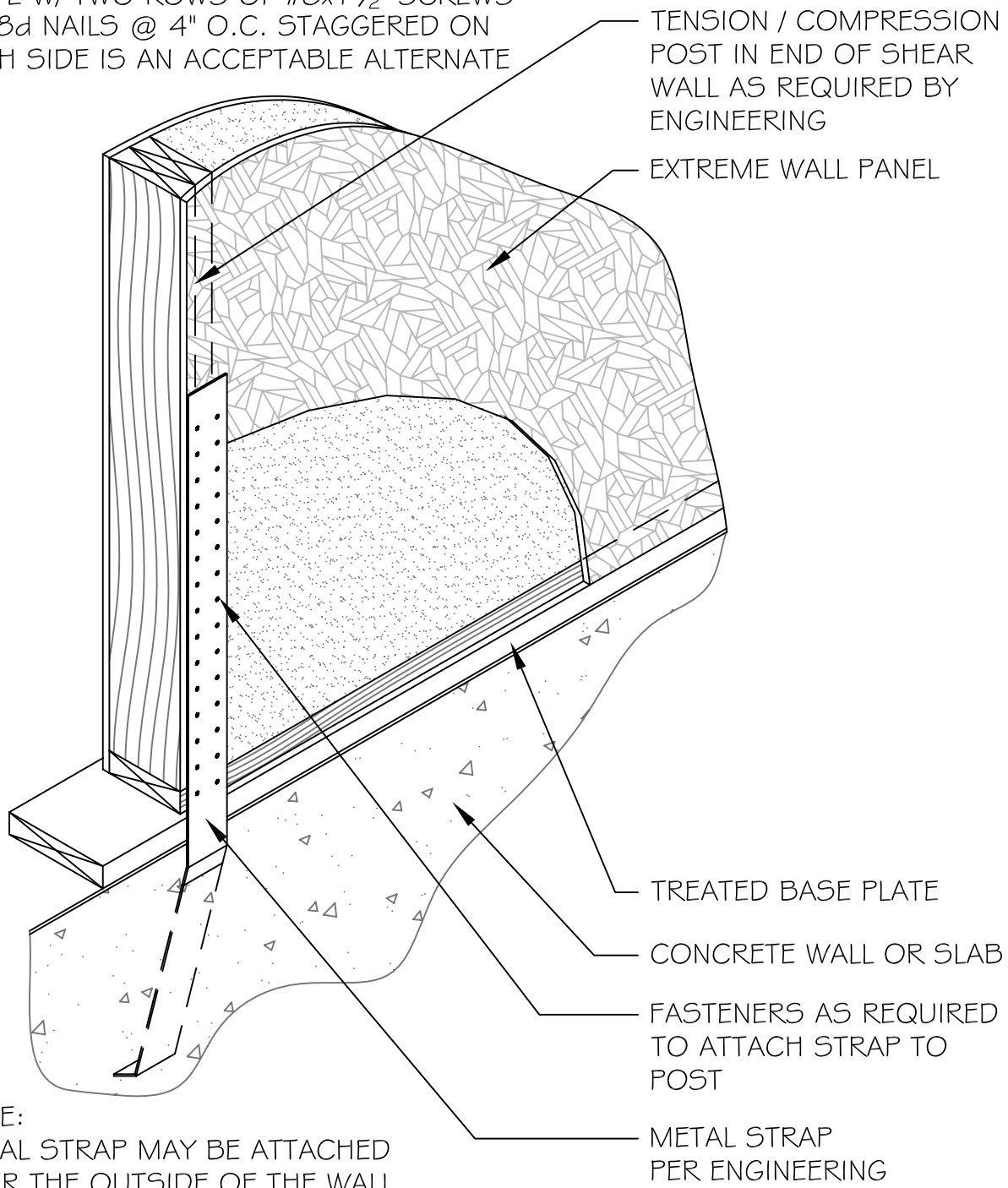


NOTE:  
 VERIFY W/ ENGINEER IF DOUBLE SILL  
 PLATE W/ TWO ROWS OF #8x1 1/2" SCREWS  
 OR 8d NAILS @ 4" O.C. STAGGERED ON  
 EACH SIDE IS AN ACCEPTABLE ALTERNATE



NOTE:  
 METAL STRAP MAY BE ATTACHED  
 OVER THE OUTSIDE OF THE WALL  
 PANEL - USE FASTENERS THAT WILL  
 NOT AFFECT FINISHING OF THE WALL

SECTION  
 NOT TO SCALE

\* DETAIL COURTESY OF PREMIER BUILDING SYSTEMS

DETAIL TITLE : STRAP HOLDDOWN CONNECTION

DETAIL NO. : EP-212

PAGE NO. : 2 - 12

UPDATED : 2/5/2009

**Extreme Panel**  
 Technologies, Inc.  
 QUALITY EFFICIENT BUILDING SYSTEMS