

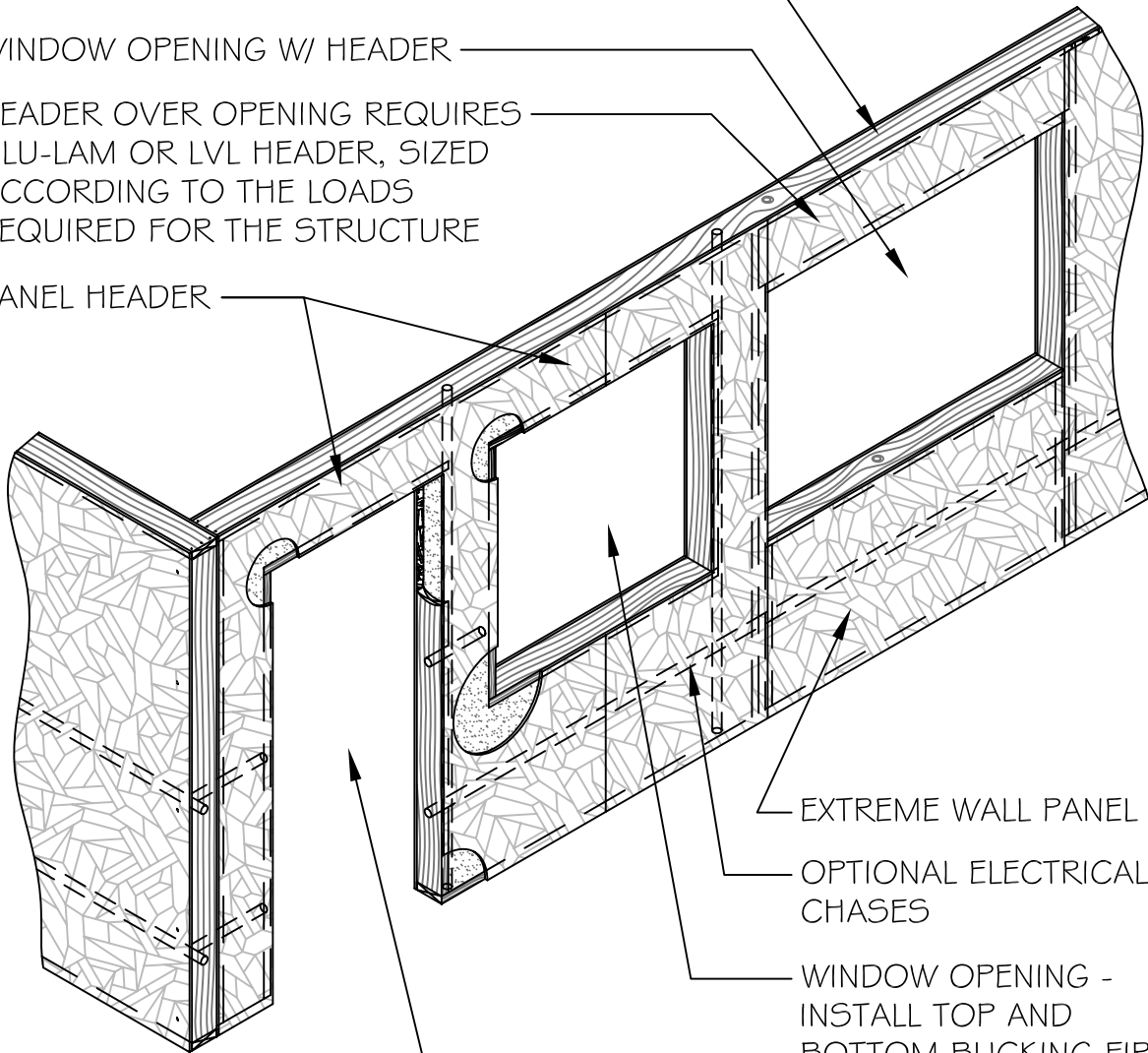
NOTE: SEE PBS DESIGN MANUAL LOAD CHARTS FOR ALLOWABLE LOADS

CONTINUOUS TOP PLATE - SPLICES
MINIMUM 1'-0" FROM PANEL JOINTS

WINDOW OPENING W/ HEADER

HEADER OVER OPENING REQUIRES
GLU-LAM OR LVL HEADER, SIZED
ACCORDING TO THE LOADS
REQUIRED FOR THE STRUCTURE

PANEL HEADER



EXTREME WALL PANEL

OPTIONAL ELECTRICAL
CHASES

WINDOW OPENING -
INSTALL TOP AND
BOTTOM BUCKING FIRST,
THEN THE SIDES SECOND

DOOR OPENING -
INSTALL TOP BUCKING
FIRST, THEN THE SIDES
SECOND

SECTION
NOT TO SCALE

* DETAIL COURTESY OF PREMIER BUILDING SYSTEMS

DETAIL TITLE : TYPICAL PANEL WALL

DETAIL NO. : EP-301

PAGE NO. : 3 - 1

UPDATED : 2/5/2009

Extreme Panel
Technologies, Inc.
QUALITY EFFICIENT BUILDING SYSTEMS