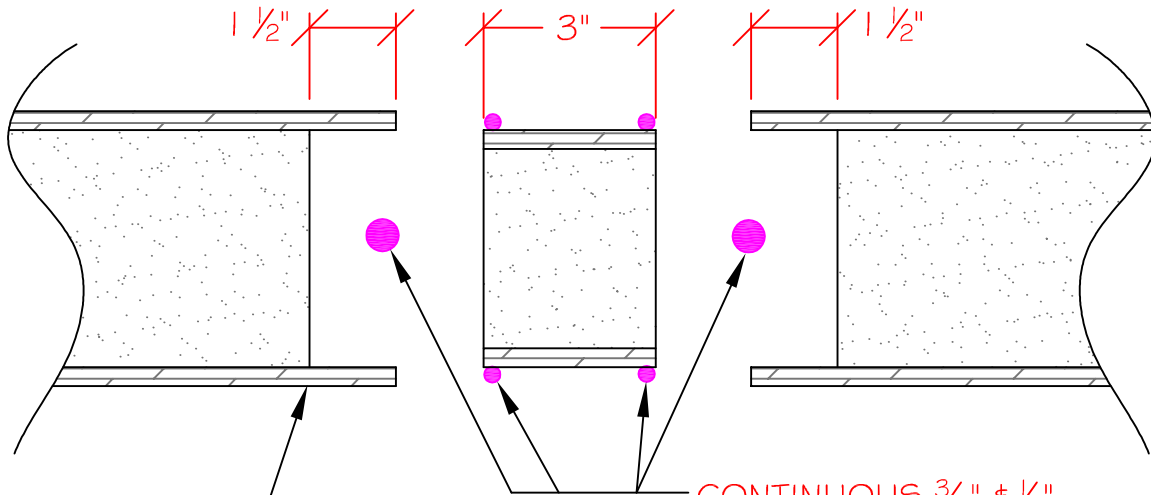


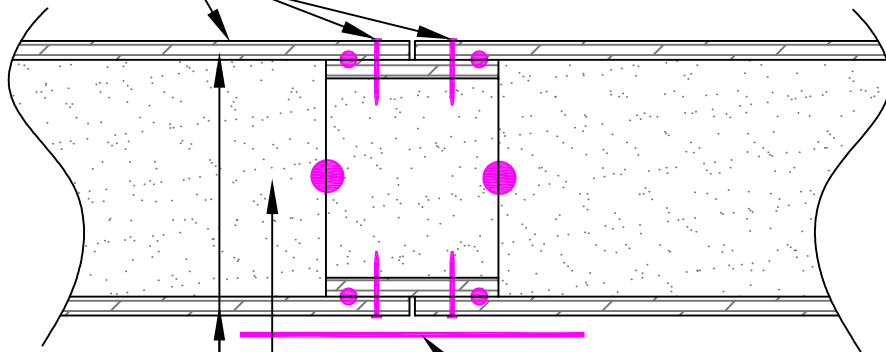
PRE-ASSEMBLED VIEW



CONTINUOUS  $\frac{3}{8}$ "  $\times$   $\frac{1}{2}$ "  
PANEL SEALANT  
TYPICAL EACH SIDE

EXTREME WALL,  
ROOF, OR  
FLOOR PANEL

$1\frac{1}{2}$ " SCREWS @ 8" O.C. OR  
2"-8d NAILS @ 6" O.C. BOTH  
SIDES TOP & BOTTOM (U.N.O.)



$\frac{7}{16}$ " O.S.B. SKINS ON  
BOTH SIDES, TYPICAL

6" SIP TAPE ON (WINTER)  
WARM SIDE OF PANEL

EXPANDED  
POLYSTYRENE CORE

ASSEMBLED VIEW

SECTION  
NOT TO SCALE

DETAIL TITLE : BLOCK SPLINE CONNECTION (STD)

DETAIL NO. : EP-103

PAGE NO. : 1 - 3

UPDATED : MARCH 2017

**Extreme Panel**

TECHNOLOGIES, INC.

STRUCTURAL INSULATED PANELS