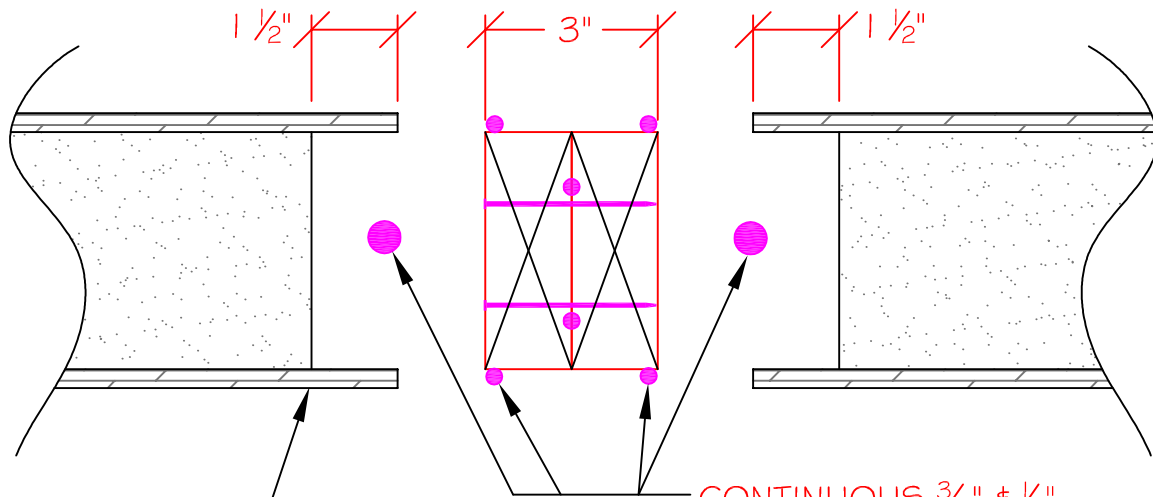


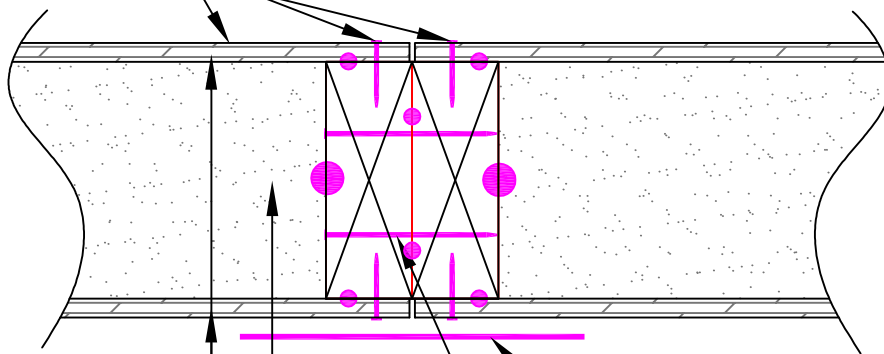
PRE-ASSEMBLED VIEW



CONTINUOUS $\frac{3}{8}$ " \times $\frac{1}{2}$ "
PANEL SEALANT
TYPICAL EACH SIDE

EXTREME WALL,
ROOF, OR
FLOOR PANEL

$1\frac{1}{2}$ " SCREWS @ 8" O.C. OR
2"-8d NAILS @ 6" O.C. BOTH
SIDES TOP & BOTTOM (U.N.O.)



$\frac{7}{16}$ " O.S.B. SKINS ON
BOTH SIDES, TYPICAL

EXPANDED
POLYSTYRENE CORE

6" SIP TAPE ON (WINTER)
WARM SIDE OF PANEL

3" CONST. LAGS 24" O.C.
OR 16d NAILS @ 12" O.C.
IN 2 ROWS STAGGERED W/
PANEL SEALANT BETWEEN
2x MEMBERS

ASSEMBLED VIEW

SECTION
NOT TO SCALE

DETAIL TITLE : DOUBLE 2x LUMBER CONNECTION

DETAIL NO. : EP-105

PAGE NO. : 1 - 5

UPDATED : MARCH 2017

Extreme Panel

TECHNOLOGIES, INC.

STRUCTURAL INSULATED PANELS