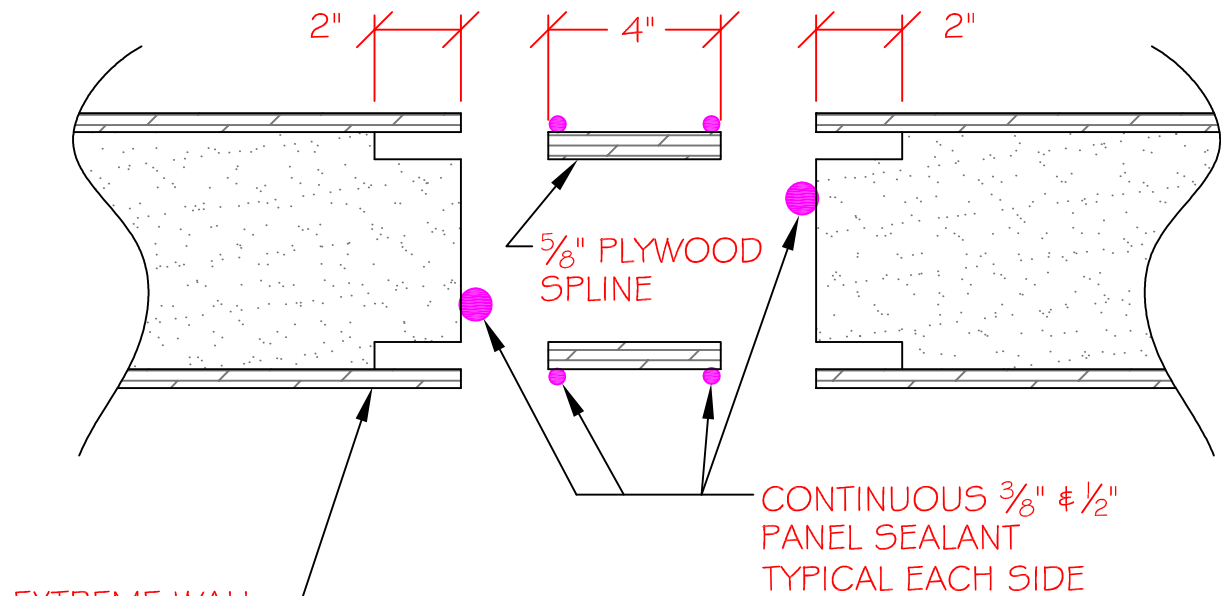


PRE-ASSEMBLED VIEW



EXTREME WALL, ROOF, OR FLOOR PANEL

1 1/2" SCREWS @ 8" O.C. OR 2"-8d NAILS @ 6" O.C. BOTH SIDES TOP & BOTTOM (U.N.O.)

7/16" O.S.B. SKINS ON BOTH SIDES, TYPICAL

EXPANDED POLYSTYRENE CORE

6" SIP TAPE ON (WINTER) WARM SIDE OF PANEL

ASSEMBLED VIEW

SECTION
NOT TO SCALE

DETAIL TITLE : PLYWOOD SPLINE CONNECTION

DETAIL NO. : EP-106

PAGE NO. : 1 - 6

UPDATED : MARCH 2017

Extreme Panel

TECHNOLOGIES, INC.

STRUCTURAL INSULATED PANELS