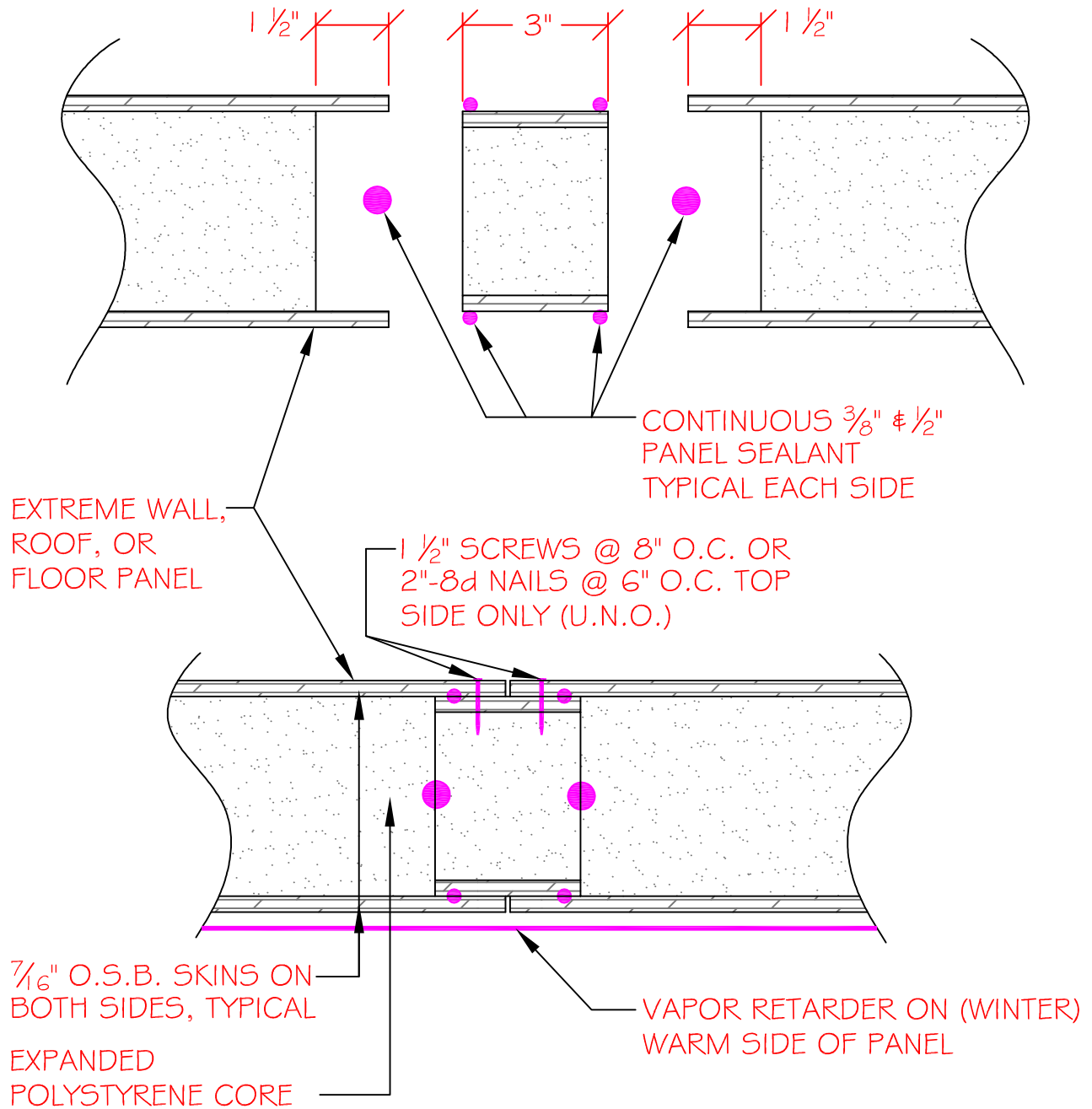


PRE-ASSEMBLED VIEW



NOTE: THIS DETAIL USED IN SITUATIONS WHERE THE SPLINE CONNECTION ON THE WARM SIDE OF THE PANELS IS NOT ACCESSIBLE

ASSEMBLED VIEW

SECTION
NOT TO SCALE

DETAIL TITLE : BLOCK SPLINE (VAPOR RETARDER)

DETAIL NO. : EP-107

PAGE NO. : 1 - 7

UPDATED : MARCH 2017

Extreme Panel

TECHNOLOGIES, INC.

STRUCTURAL INSULATED PANELS