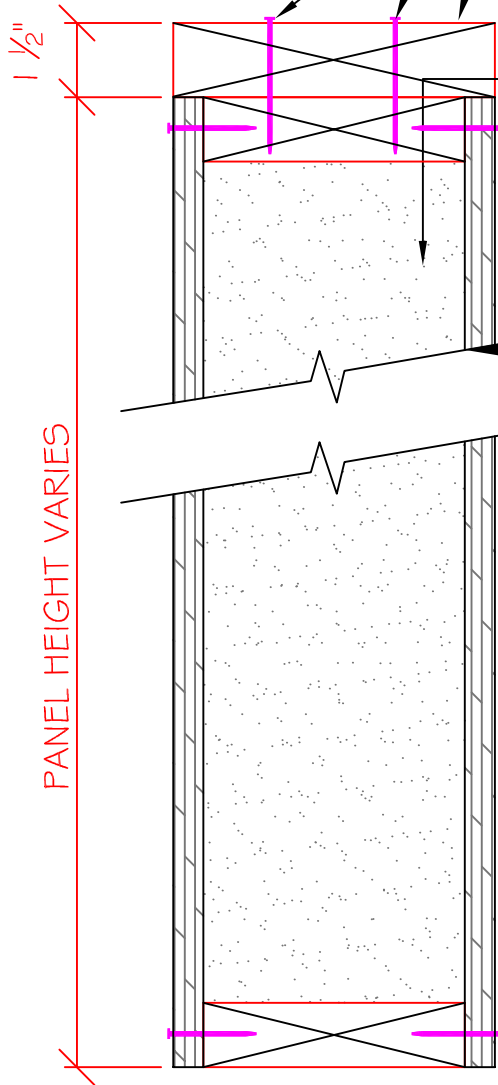


3" CONST. LAGS @ 24" O.C.  
OR 16d NAILS @ 12" O.C.  
IN 2 ROWS STAGGERED  
U.N.O.

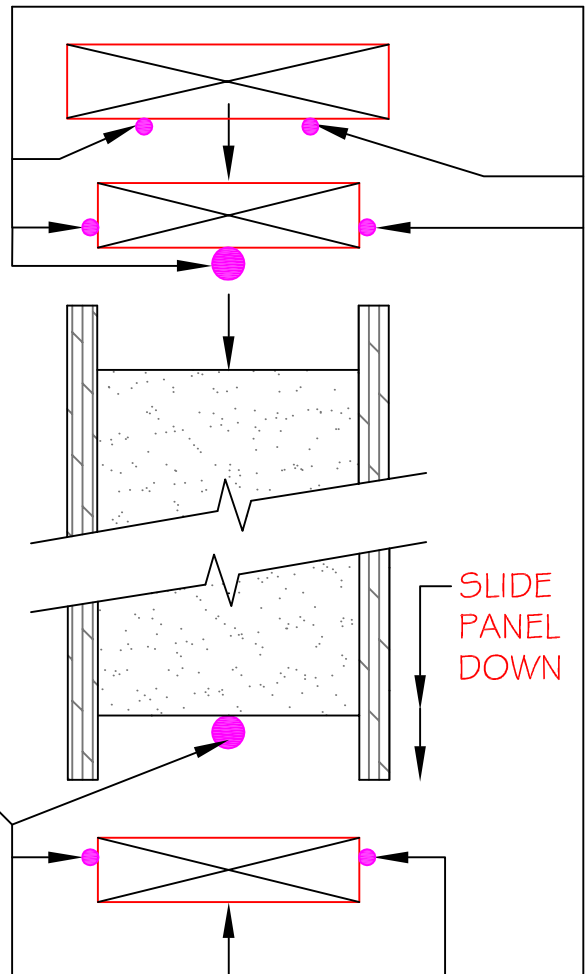
STANDARD 2x LUMBER, OSL  
RIMBOARD OR LVL MATERIAL RIPPED  
TO OVERALL WIDTH OF PANEL. MAY  
BE USED TO INCREASE WALL HEIGHT  
OR TO INCREASE POINT LOADING  
CAPACITY. SEE POINT LOAD CHART.



THE FOAM IS HELD BACK 1/2" TO  
ALLOW THE TOP PLATE TO SIT FLUSH  
WITH THE TOP OF THE PANEL

1/2" SCREWS @ 8" O.C. OR 2"-8d NAILS  
@ 6" O.C. BOTH SIDES, TOP AND  
BOTTOM (U.N.O.)

EXTREME PANEL WALL



CONTINUOUS 3/8" x 1/2" PANEL  
SEALANT IS TO BE APPLIED TO  
THE TOP AND BOTH SIDES OF  
THE TOP AND SILL PLATES AND  
BETWEEN TOP PLATE AND TOP  
SHIM PLATE

SILL PLATE IS TO BE FASTENED IN PLACE W/ 3" CONST.  
LAGS @ 24" O.C. OR 16d NAILS @ 12" O.C. IN 2  
ROWS STAGGERED BEFORE PANEL INSTALLATION

SECTION  
NOT TO SCALE

DETAIL TITLE : TOP SHIM PLATE CONNECTION

DETAIL NO. : EP-111

PAGE NO. : 1 - 11

UPDATED : MARCH 2017

**Extreme Panel**

TECHNOLOGIES, INC.

STRUCTURAL INSULATED PANELS