

PRE-ASSEMBLED VIEW
(WITHOUT TOP PLATES)

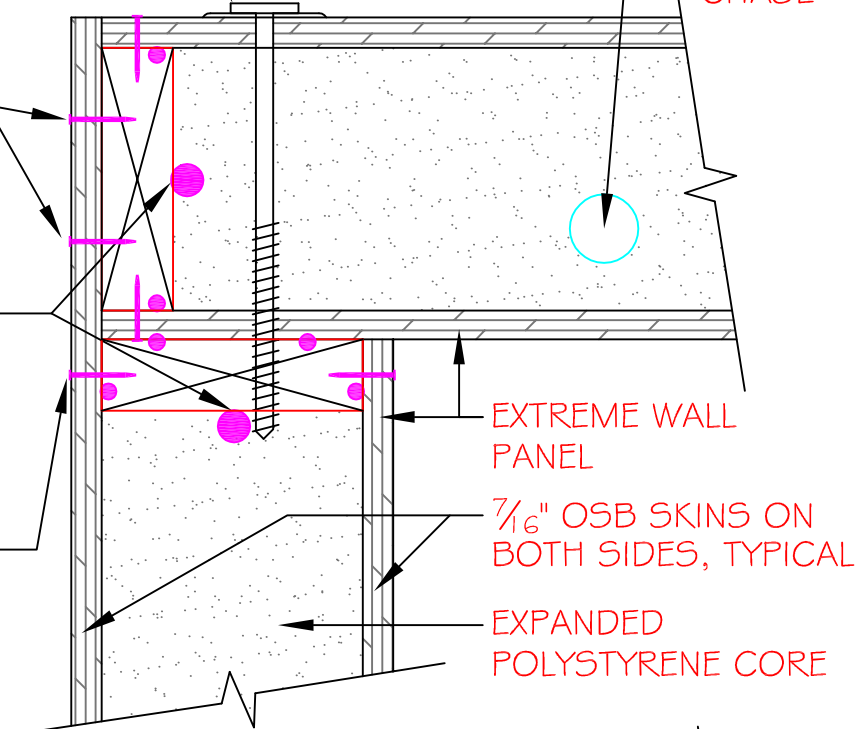
1 1/2" SCREWS OR
2"-8d NAILS @ 12"
O.C. IN 2 ROWS
STAGGERED

CONTINUOUS 3/8" & 1/2"
PANEL SEALANT ON
EACH SIDE OF
LUMBER ON EACH
PANEL

1 1/2" SCREWS @ 8" O.C.
OR 2"-8d NAILS @ 6"
O.C. BOTH SIDES, TOP
AND BOTTOM (U.N.O.)

PANEL SCREWS
W/ WASHERS @
12" O.C. (U.N.O.)

OPTIONAL
FACTORY
INSTALLED
ELECTRICAL
CHASE

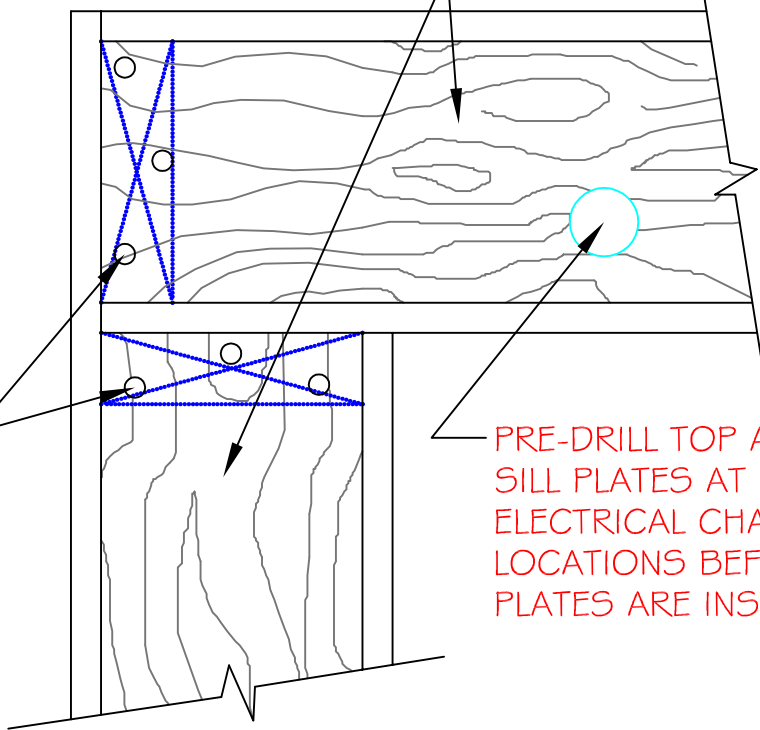


ASSEMBLED VIEW

SCREW OR NAIL THE
TOP PLATE TO THE
VERTICAL STUD WITH
(2) 3" CONST. LAGS
OR
(3) 16d NAILS

TOP PLATES

PRE-DRILL TOP AND
SILL PLATES AT
ELECTRICAL CHASE
LOCATIONS BEFORE
PLATES ARE INSTALLED



SECTION
NOT TO SCALE

DETAIL TITLE : FLY-BY CORNER CONNECTION (OPT)

DETAIL NO. : EP-113

PAGE NO. : 1 - 13

UPDATED : MARCH 2017

Extreme Panel

TECHNOLOGIES, INC.

STRUCTURAL INSULATED PANELS