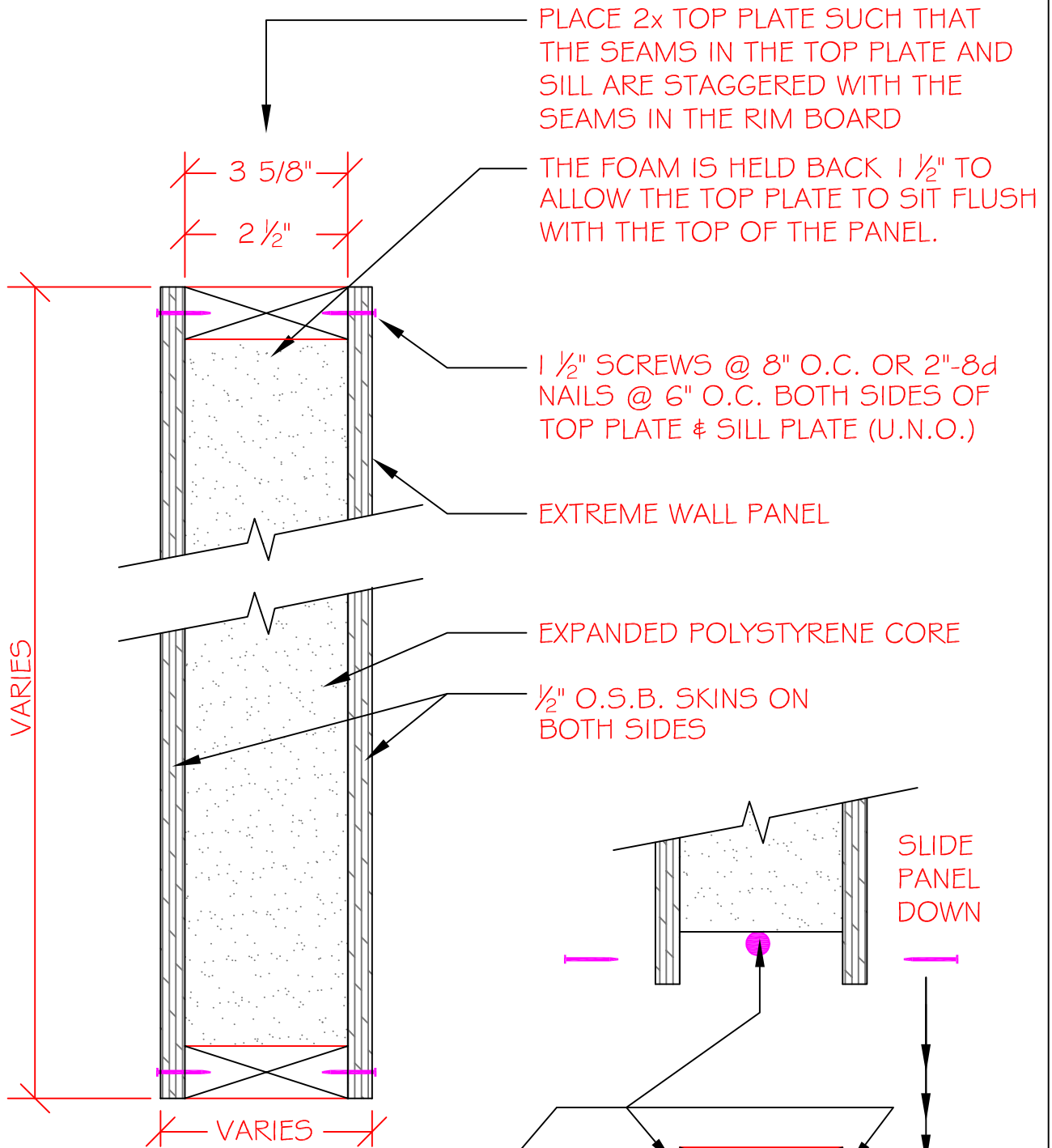


NOTE: STOP RIM BOARD WHERE POINT LOADS GO THROUGH



PLACE 2x TOP PLATE SUCH THAT THE SEAMS IN THE TOP PLATE AND SILL ARE STAGGERED WITH THE SEAMS IN THE RIM BOARD

THE FOAM IS HELD BACK 1/2" TO ALLOW THE TOP PLATE TO SIT FLUSH WITH THE TOP OF THE PANEL.

1 1/2" SCREWS @ 8" O.C. OR 2"-8d NAILS @ 6" O.C. BOTH SIDES OF TOP PLATE & SILL PLATE (U.N.O.)

EXTREME WALL PANEL

EXPANDED POLYSTYRENE CORE

1/2" O.S.B. SKINS ON BOTH SIDES

SLIDE PANEL DOWN

CONTINUOUS 3/8" & 1/2" PANEL SEALANT IS TO BE APPLIED TO ALL SURFACES WHERE WOOD CONTACTS WOOD ON BOTH SILL & TOP PLATES

SILL PLATE IS TO BE FASTENED IN PLACE W/ 3" CONST. LAGS @ 24" O.C. OR 16d NAILS @ 12" O.C. IN 2 ROWS STAGGERED BEFORE PANEL INSTALLATION

SECTION  
NOT TO SCALE

DETAIL TITLE : STRUCTURAL INSULATED RIM BOARD

DETAIL NO. : EP-119

PAGE NO. : 1 - 19

UPDATED : MARCH 2017

**Extreme Panel**

TECHNOLOGIES, INC.

STRUCTURAL INSULATED PANELS