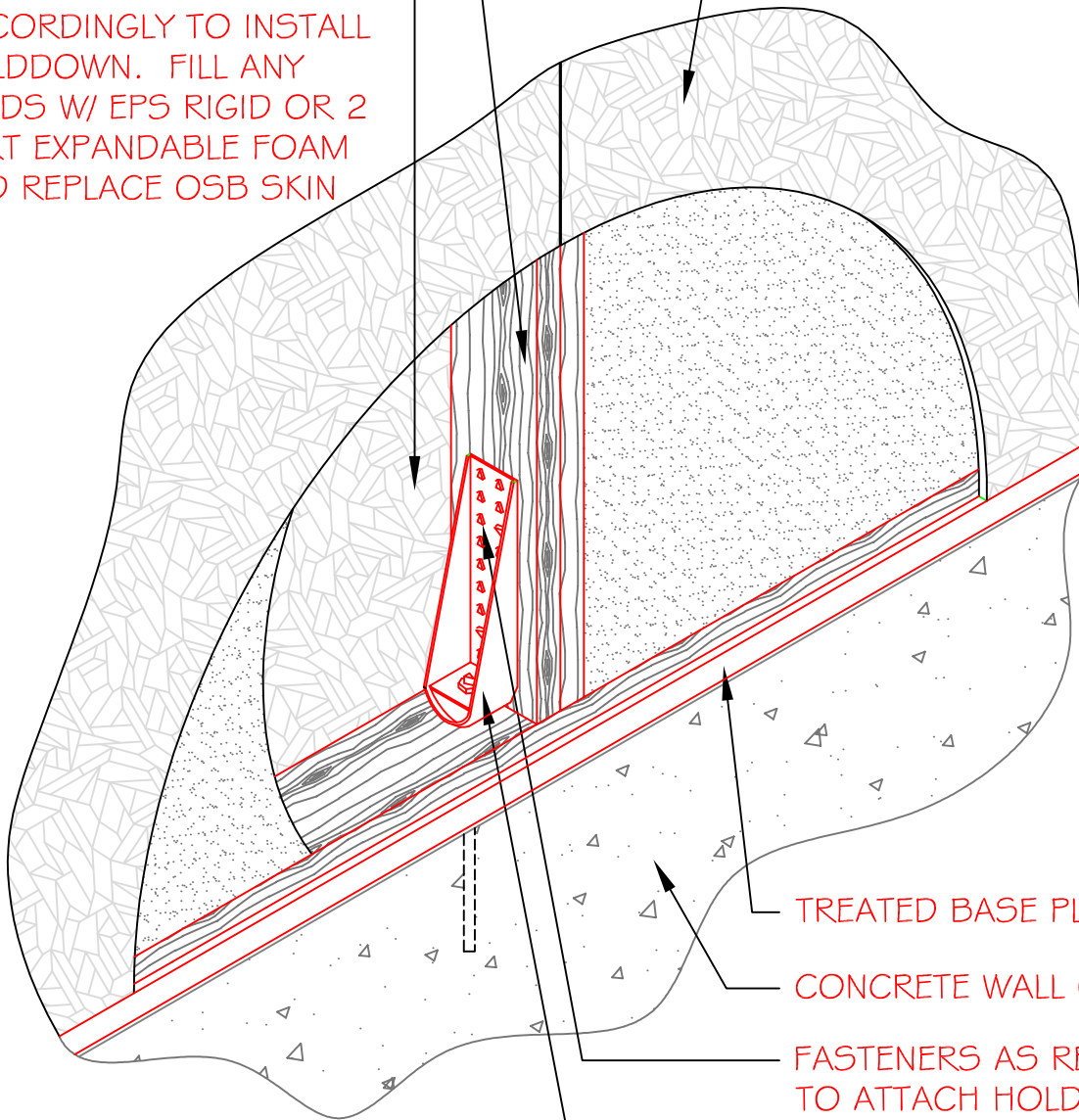


TENSION / COMPRESSION  
POST IN END OF SHEAR  
WALL AS REQUIRED BY  
ENGINEERING

FIELD CUT PANEL  
ACCORDINGLY TO INSTALL  
HOLDDOWN. FILL ANY  
VOIDS W/ EPS RIGID OR 2  
PART EXPANDABLE FOAM  
AND REPLACE OSB SKIN

EXTREME WALL PANEL



TREATED BASE PLATE

CONCRETE WALL OR SLAB

FASTENERS AS REQUIRED  
TO ATTACH HOLDDOWN  
TO POST

HOLDDOWN ANCHOR  
PER ENGINEERING

NOTE:  
VERIFY W/ ENGINEER IF DOUBLE SILL PLATE  
W/ TWO ROWS OF 1 1/2" SCREWS OR 2"-8d  
NAILS @ 4" O.C. STAGGERED ON EACH  
SIDE IS AN ACCEPTABLE ALTERNATE

SECTION  
NOT TO SCALE

DETAIL TITLE : HOLDDOWN CONNECTION

DETAIL NO. : EP-211

PAGE NO. : 2 - 11

UPDATED : MARCH 2017

**Extreme Panel**

TECHNOLOGIES, INC.

STRUCTURAL INSULATED PANELS