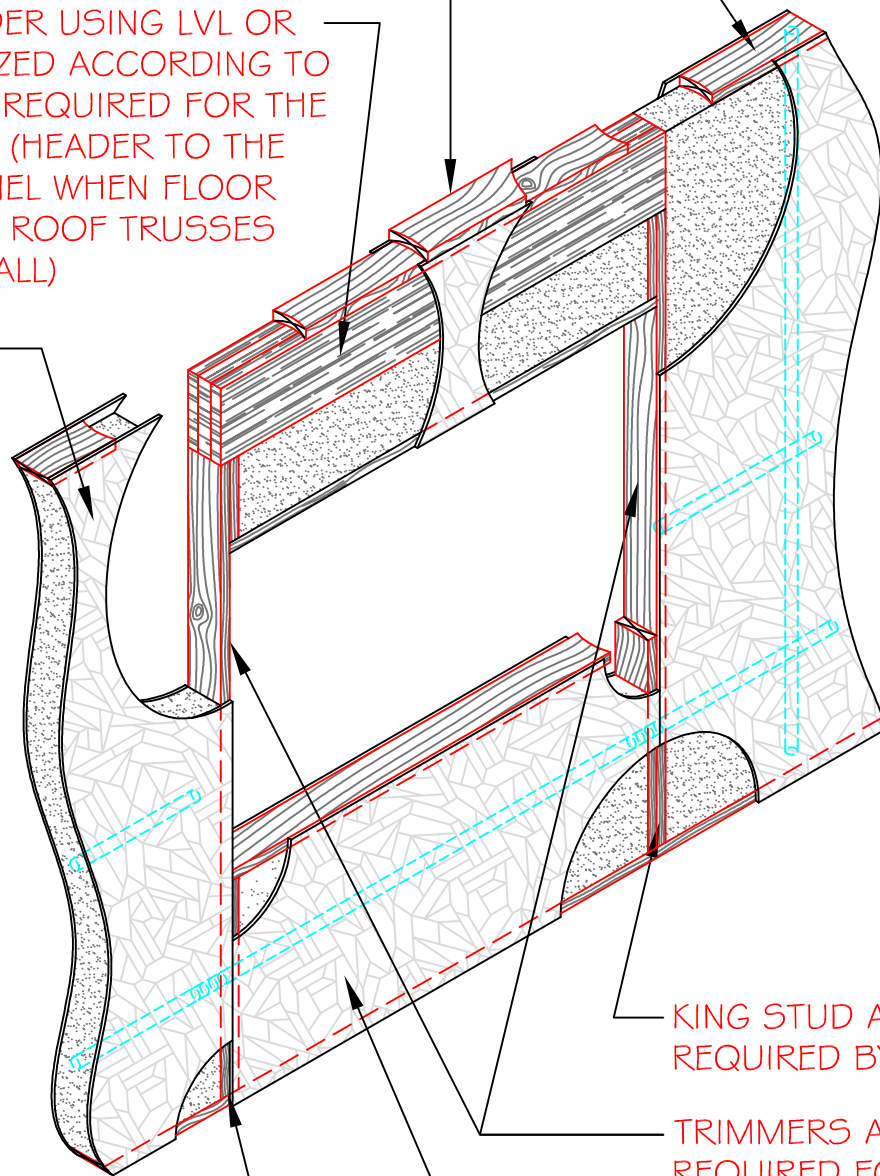


CONTINUOUS TOP PLATE - SPLICES
MINIMUM 1'-0" FROM PANEL JOINTS

TOP SHIM PLATE

SOLID HEADER USING LVL OR
GLU-LAM SIZED ACCORDING TO
THE LOADS REQUIRED FOR THE
STRUCTURE (HEADER TO THE
TOP OF PANEL WHEN FLOOR
SYSTEM OR ROOF TRUSSES
BEAR ON WALL)

EXTREME
WALL
PANEL



KING STUD AS
REQUIRED BY ENGINEER

TRIMMERS AS
REQUIRED FOR PROPER
HEADER BEARING

LOWER WINDOW PANEL

KING STUD AS
REQUIRED BY ENGINEER

NOTE:
HEADER LOCATED AT
BOTTOM OF UPPER
WINDOW PANEL W/
PANEL ROOF

SECTION
NOT TO SCALE

DETAIL TITLE : HEADERED WINDOW OPENING

DETAIL NO. : EP-304A

PAGE NO. : 3 - 4

UPDATED : MARCH 2017

Extreme Panel

TECHNOLOGIES, INC.

STRUCTURAL INSULATED PANELS