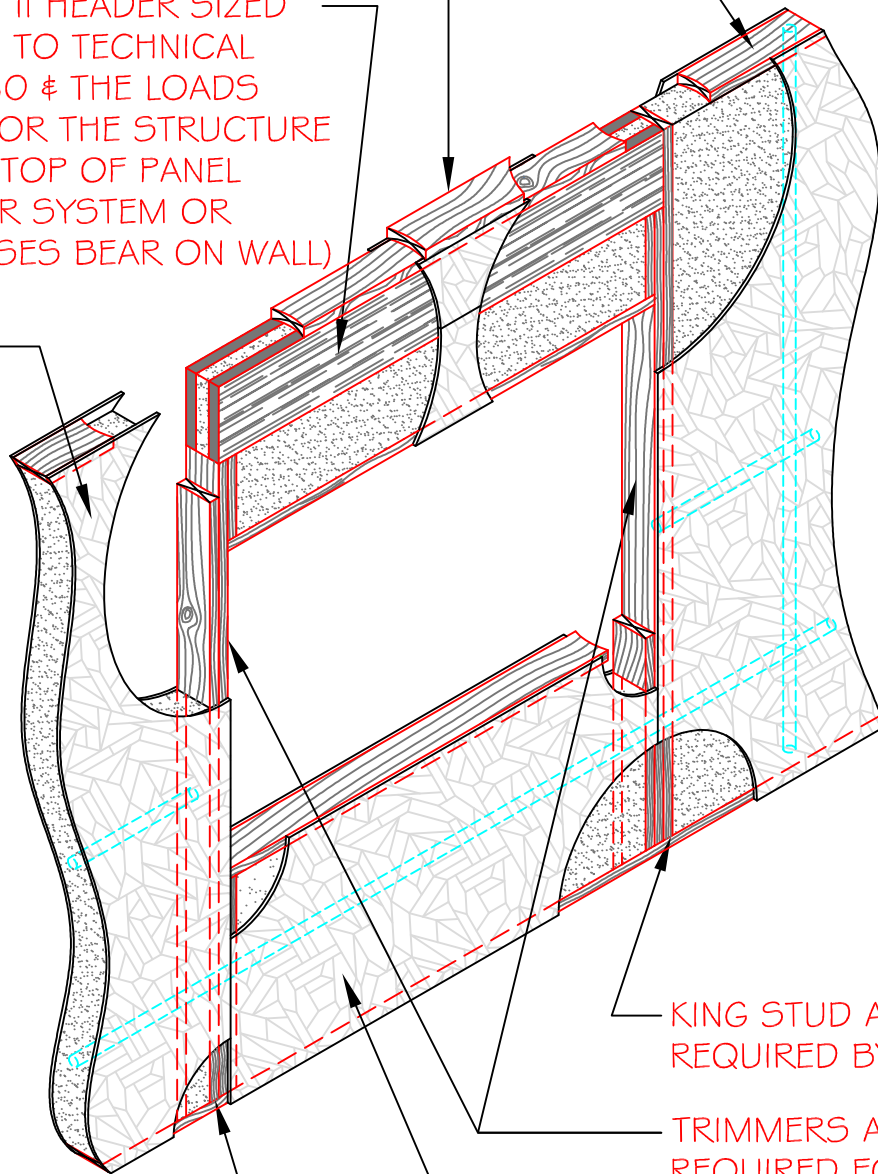


CONTINUOUS TOP PLATE - SPLICES  
MINIMUM 1'-0" FROM PANEL JOINTS

TOP SHIM PLATE

INSUL-BEAM II HEADER SIZED  
ACCORDING TO TECHNICAL  
BULLETIN #30 & THE LOADS  
REQUIRED FOR THE STRUCTURE  
(HEADER @ TOP OF PANEL  
WHEN FLOOR SYSTEM OR  
ROOF TRUSSES BEAR ON WALL)

EXTREME  
WALL  
PANEL



KING STUD AS  
REQUIRED BY ENGINEER

TRIMMERS AS  
REQUIRED FOR PROPER  
HEADER BEARING

LOWER WINDOW PANEL

KING STUD AS  
REQUIRED BY ENGINEER

NOTE:  
HEADER LOCATED AT  
BOTTOM OF UPPER  
WINDOW PANEL W/  
PANEL ROOF

SECTION  
NOT TO SCALE

DETAIL TITLE : INSUL-BEAM II HEADERED OPENING

DETAIL NO. : EP-304B

PAGE NO. : 3 - 4b

UPDATED : MARCH 2017

**Extreme Panel**

TECHNOLOGIES, INC.

STRUCTURAL INSULATED PANELS