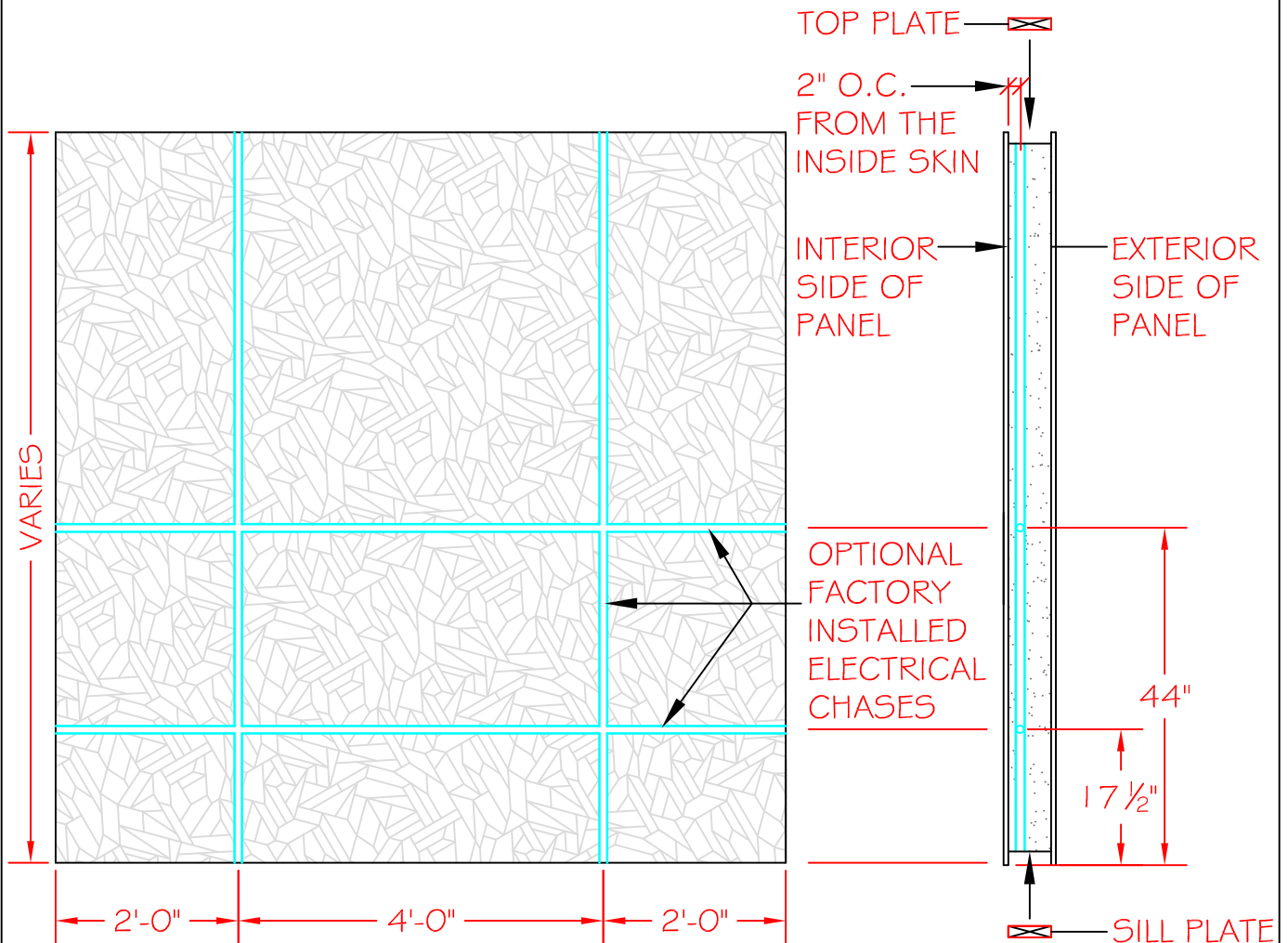


NOTES:

1. HOLES MUST BE DRILLED IN THE TOP AND BOTTOM PLATES AT THE LOCATION OF THE VERTICAL ELECTRICAL CHASES TO ALLOW ACCESS TO THE CHASE AFTER THE PANELS ARE IN PLACE. HOLES THAT ARE ON OR NEAR A TRUSS OR JOIST CAN BE DRILLED IN AT AN ANGLE TO ALLOW FOR ACCESS.
2. WITH THE EXCEPTION OF THE FACTORY INSTALLED CHASES, ALL OTHER NECESSARY ELECTRICAL HOLES ARE TO BE FIELD CUT ONSITE USING THE HOT IRON FOAM CUTTER SUPPLIED. ALSO, PLAN AHEAD FOR ELECTRICAL CHASES AROUND DOOR ROUGH OPENINGS.
3. ADDITIONAL FIELD INSTALLED ELECTRICAL CHASES MAY BE NEEDED AROUND ROUGH OPENINGS. THEY CAN BE FIELD CUT BEFORE INSTALLING DIMENSIONAL LUMBER WITH AN ELECTRIC FOAM CUTTER.
4. ALL PENETRATIONS ARE REQUIRED TO BE FOAMED IN PLACE AFTER ELECTRICAL ROUGH-IN IS DONE.
5. FOLLOW LOCAL CODE REQUIREMENTS FOR ELECTRICAL INSTALLATION.



SECTION  
NOT TO SCALE

DETAIL TITLE : ELECTRICAL CHASES

DETAIL NO. : EP-306

PAGE NO. : 3 - 6

UPDATED : MARCH 2017

**Extreme Panel**

TECHNOLOGIES, INC.

STRUCTURAL INSULATED PANELS