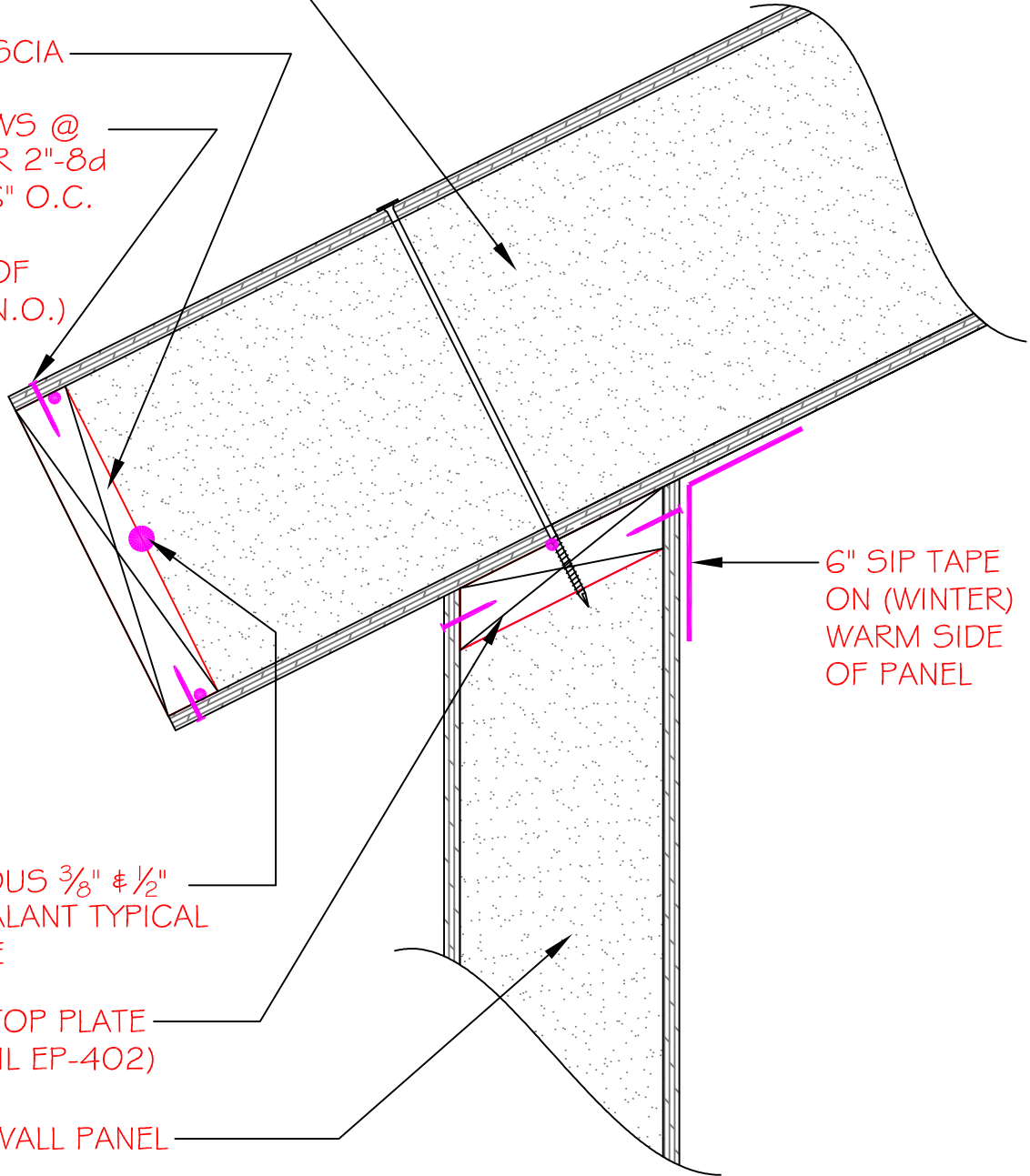


EXTREME ROOF PANEL

2x SUBFASCIA

1 1/2" SCREWS @
8" O.C. OR 2"-8d
NAILS @ 6" O.C.
TOP AND
BOTTOM OF
PANEL (U.N.O.)



6" SIP TAPE
ON (WINTER)
WARM SIDE
OF PANEL

CONTINUOUS 3/8" # 1/2"
PANEL SEALANT TYPICAL
EACH SIDE

BEVELED TOP PLATE
(SEE DETAIL EP-402)

EXTREME WALL PANEL

NOTE: CONSULT LOAD DESIGN
CHARTS FOR MAXIMUM OVERHANG

SECTION
NOT TO SCALE

DETAIL TITLE : FULL PANEL OVERHANG (SQUARE CUT)

DETAIL NO. : EP-414

PAGE NO. : 4 - 14

UPDATED : MARCH 2017

Extreme Panel

TECHNOLOGIES, INC.

STRUCTURAL INSULATED PANELS