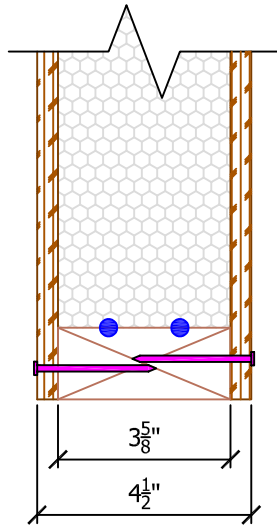
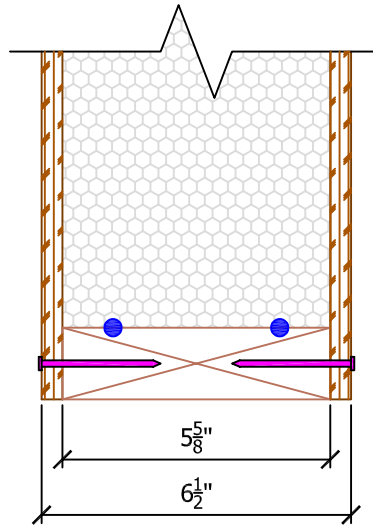


NOTES:

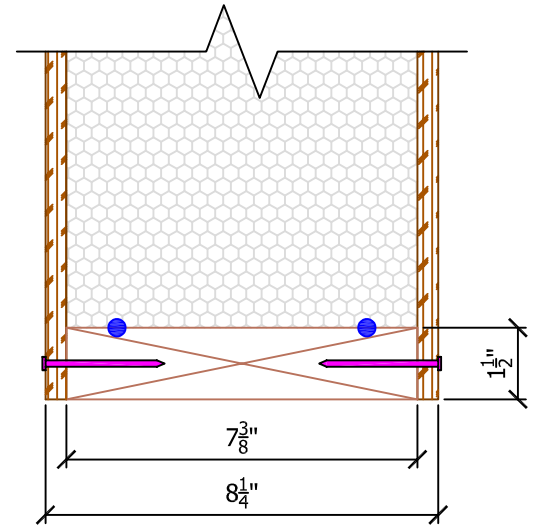
1. SIPS ARE AVAILABLE IN THICKNESSES FROM 4-1/2" THROUGH 12-1/4".
2. SIPS ARE SIZED TO USE STANDARD 2X LUMBER PLATING DIMENSIONS + 1/8" TO ACCOMMODATE LUMBER MILL VARIATIONS.
3. SIP CORE THICKNESS WILL NEVER CHANGE. STANDARD FACINGS ARE 7/16" OSB ON BOTH SIDES.



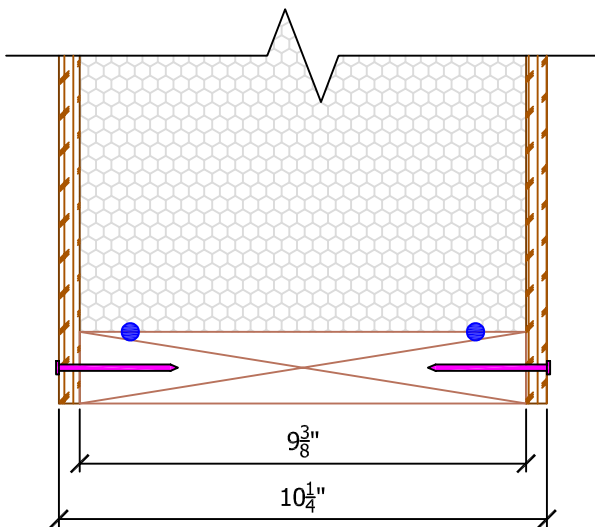
R-VALUE		
	EPS	
75° F	15	
40° F	16	



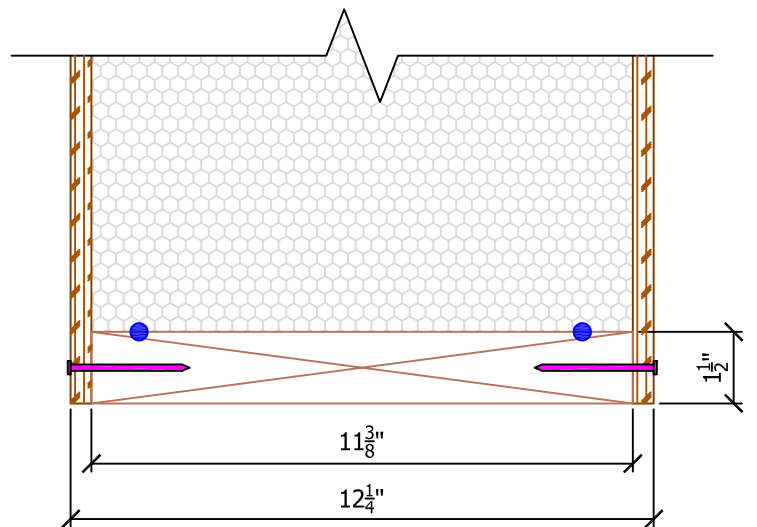
R-VALUE		
	EPS	
75° F	23	
40° F	25	



R-VALUE		
	EPS	
75° F	30	
40° F	32	



R-VALUE		
	EPS	
75° F	37	
40° F	40	



R-VALUE		
	EPS	
75° F	45	
40° F	49	

N.T.S.

* SIP THICKNESSES ARE NOMINAL INCHES

Rev: 12/10/2021

EPT -102

SIP THICKNESS AND R-VALUE

