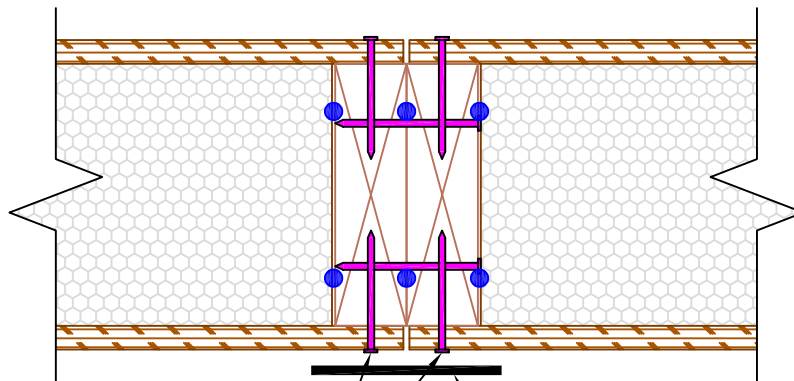
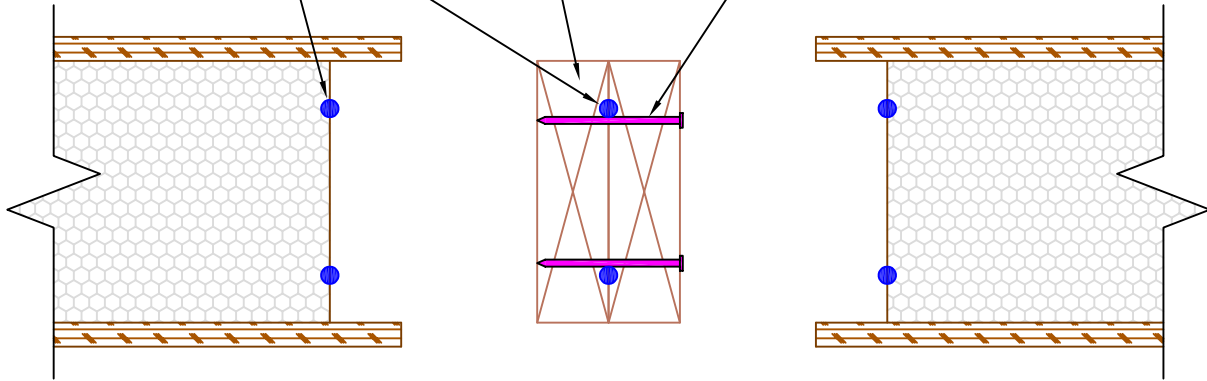


3/8"φ SEALANT AT EACH MEMBER PER EPT-103 OR EPT-104

CONTINUOUS DOUBLE 2X SPLINE.

10d BOX (0.131) NAILS 12" O.C. IN TWO ROWS STAGGERED FOR EACH MEMBER, U.N.O. IN SHEAR WALL SCHEDULE



NAILS INTO EACH MEMBER PER EPT-100S or EPT-100D U.N.O.

SIP TAPE LOCATED INTERIOR FACE PER EPT-105

N.T.S.

Rev: 12/10/2021

EPT-204

TYPE L (2X) SPLINE