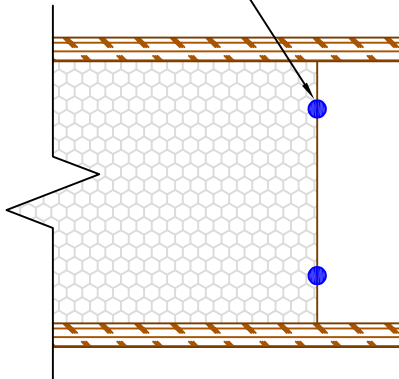
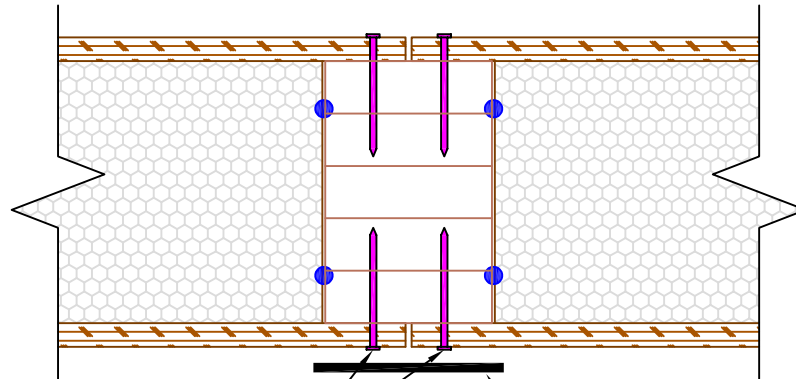
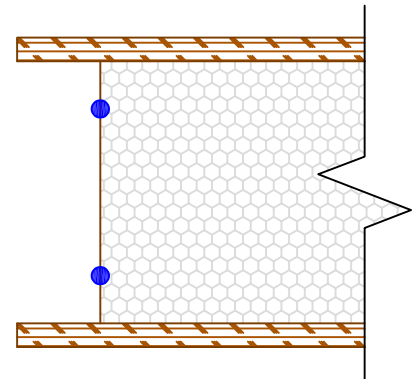


# SINGLE MEMBER LUMBER SPLINE:

3/8"  $\phi$  SEALANT PER  
EPT-103 OR EPT-104



CONTINUOUS SINGLE  
MEMBER GLU-LAM  
SPLINE

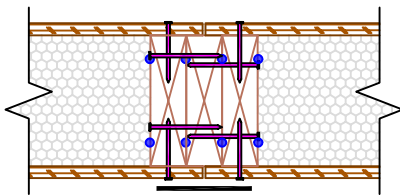


NAILS PER  
EPT-100S or  
EPT-100D U.N.O.

SIP TAPE LOCATED  
INTERIOR FACE PER  
EPT-105

## (ODD NUMBERED) 2X SPLINE:

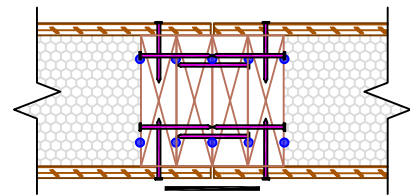
NAIL SPLINE ASSEMBLY TOGETHER WITH 10d BOX (0.131)  
NAILS 12" O.C. IN TWO ROWS STAGGERED FOR EACH MEMBER,  
U.N.O. IN SHEAR WALL SCHEDULE. FACING TO SPLINE NAILING  
PER EPT-100S or EPT-100D U.N.O.



N.T.S.

## (EVEN NUMBERED) 2X SPLINE:

NAIL SPLINE ASSEMBLY TOGETHER WITH 10d BOX (0.131)  
NAILS 12" O.C. IN TWO ROWS STAGGERED FOR EACH MEMBER,  
U.N.O. IN SHEAR WALL SCHEDULE. FACING TO SPLINE NAILING  
PER EPT-100S or EPT-100D U.N.O.



Rev: 6/3/2022

EPT-208

ALTERNATE LUMBER SPLINES