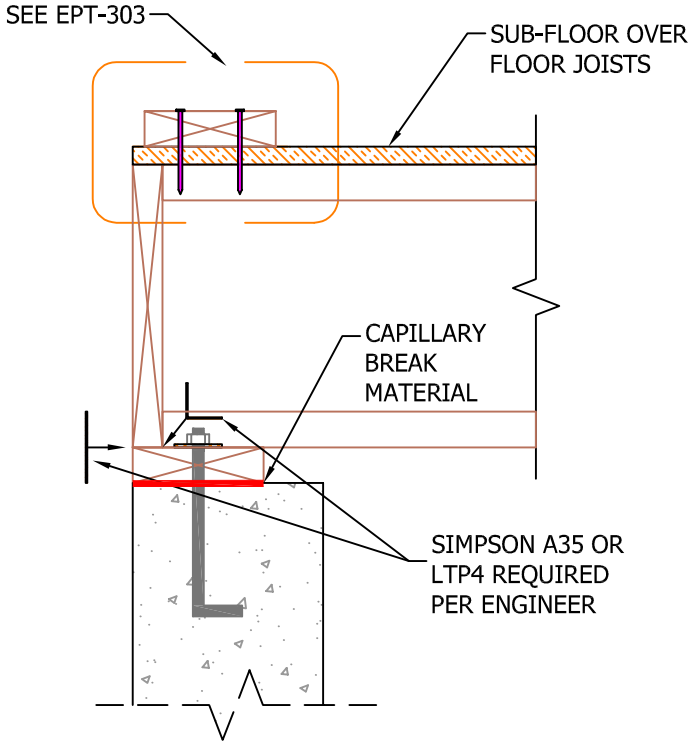
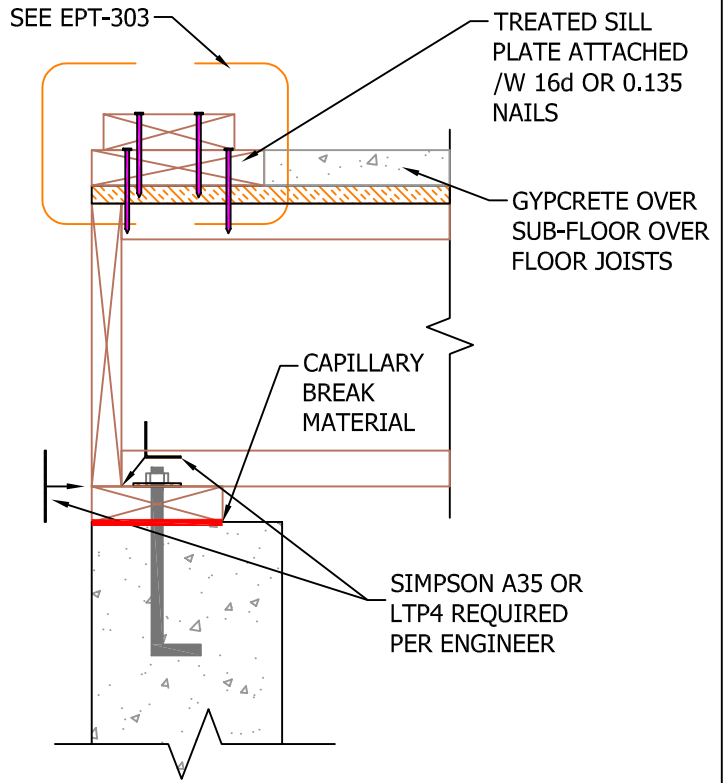


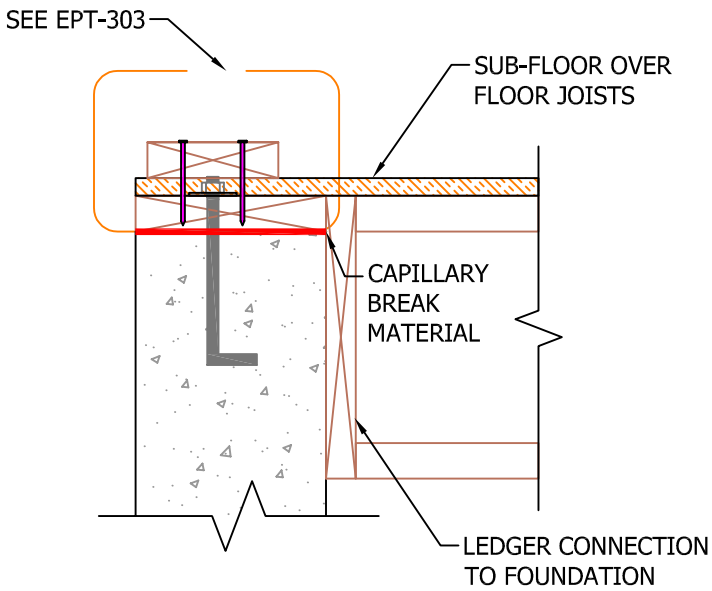
A: CONVENTIONAL FLOOR SYSTEM



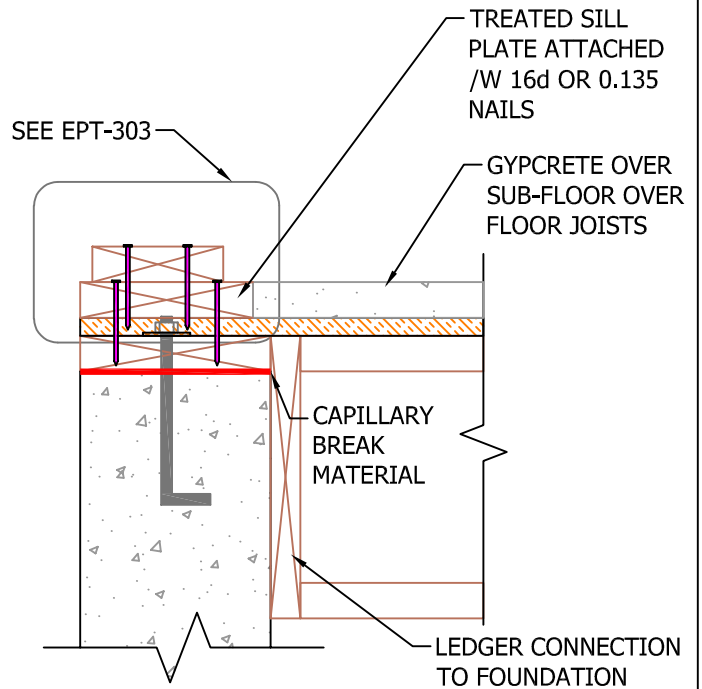
B: CONVENTIONAL FLOOR W/ GYPCRETE



C: HANGING FLOOR SYSTEM



D: HANGING FLOOR SYSTEM W/ GYPCRETE



N.T.S.

Rev: 9/19/2022

EPT-304A-D

BOTTOM PLATE
FLOOR JOIST TO CONCRETE

