

NOTE:
SEE EPT-305 FOR BOTTOM
PLATE PLACEMENT

3/8"φ SEALANT PER
EPT-103

NAILING PER EPT-100S

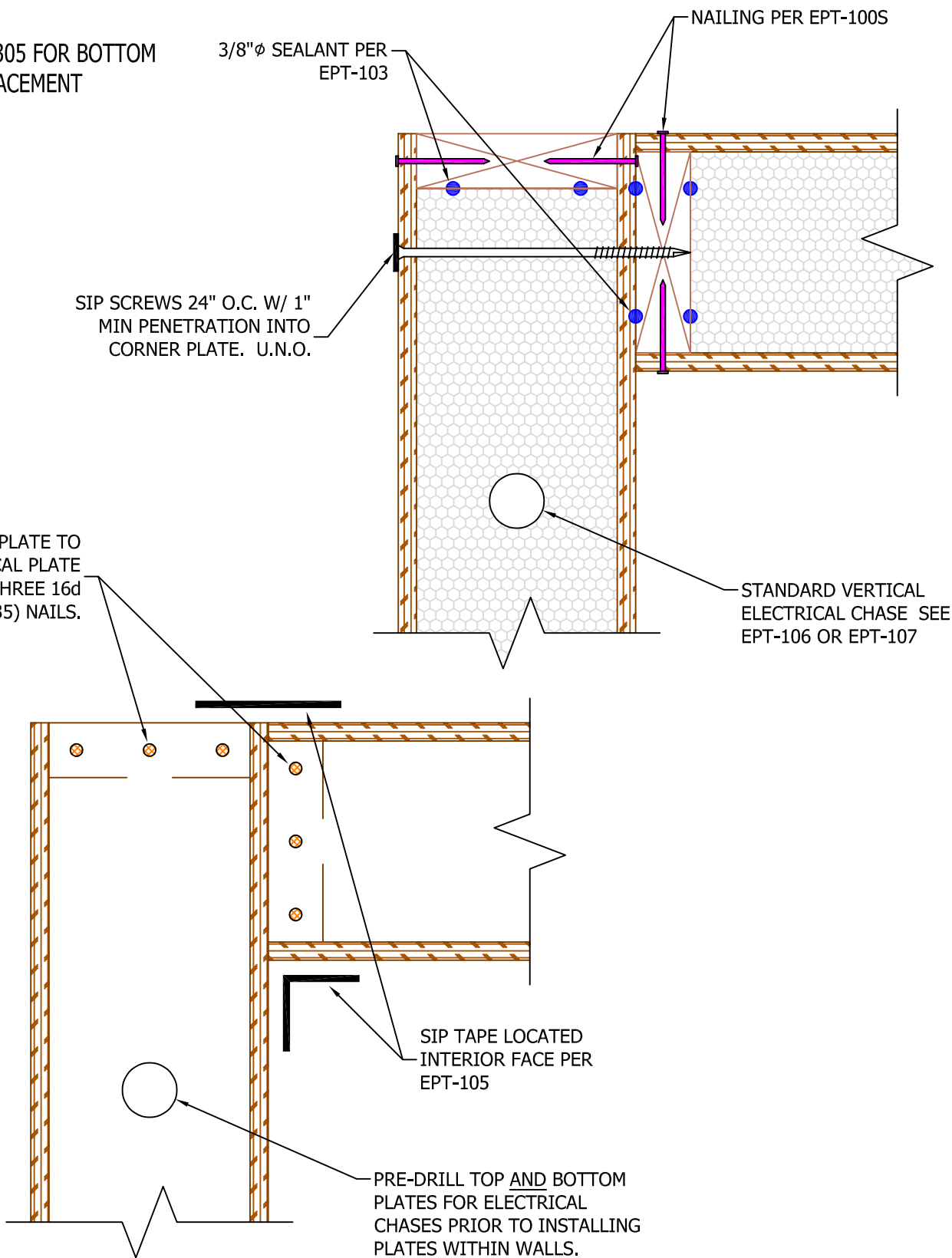
SIP SCREWS 24" O.C. W/ 1"
MIN PENETRATION INTO
CORNER PLATE. U.N.O.

NAIL TOP PLATE TO
VERTICAL PLATE
WITH THREE 16d
BOX (0.135) NAILS.

STANDARD VERTICAL
ELECTRICAL CHASE SEE
EPT-106 OR EPT-107

SIP TAPE LOCATED
INTERIOR FACE PER
EPT-105

PRE-DRILL TOP AND BOTTOM
PLATES FOR ELECTRICAL
CHASES PRIOR TO INSTALLING
PLATES WITHIN WALLS.



N.T.S.

Rev: 12/10/2021

EPT-403

WALL CORNER

