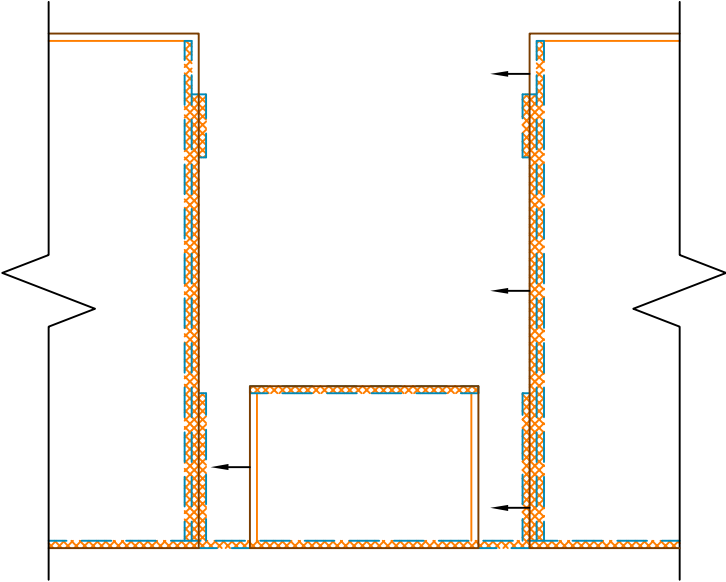


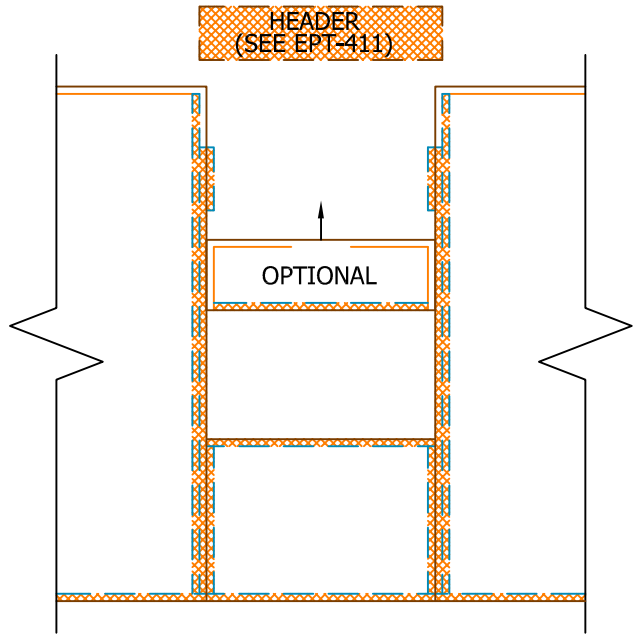
**STEP #1:**

1. PRE-DRILL ELECTRICAL CHASES PER EPT-106.
2. INSTALL KINGS, TRIMMERS, & NAILERS INTO SIP USING (2) 3/8" BEADS OF SEALANT PER EPT103 AT ALL INTERFACES (LUMBER TO LUMBER AND LUMBER TO SIP).
3. ASSEMBLE SIPS ON THE GROUND AND LIFT INTO PLACE OR ASSEMBLE VERTICALLY, ONE PIECE AT A TIME.



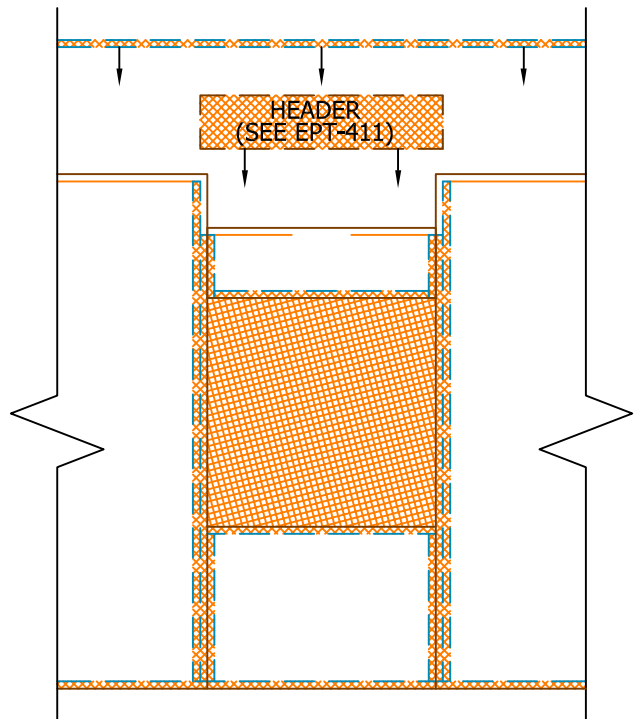
**STEP #2:**

1. DROP FILLER SIP FROM ABOVE OR BELOW 2x NAILER MEMBERS, WHICHEVER METHOD IS EASIEST.
2. CUT HEADER TO LENGTH FROM FACE OF KING TO FACE OF KING. (SEE EPT-411 FOR ASSEMBLIES).



**STEP #3:**

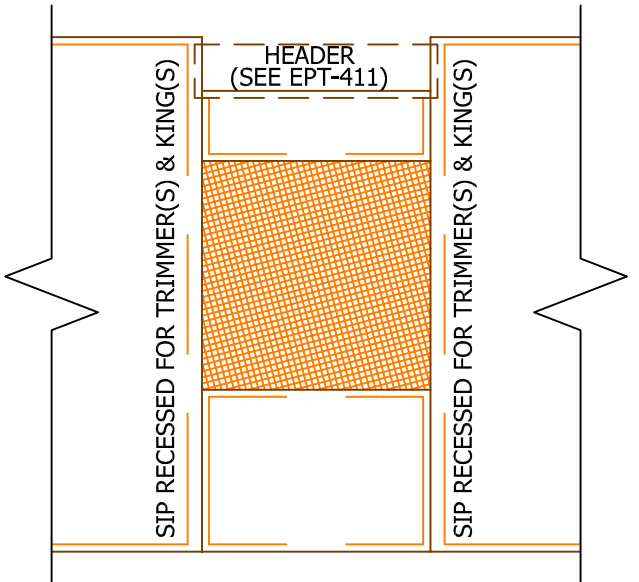
1. DROP IN HEADER FROM ABOVE.
2. INSTALL CONTINUOUS TOP PLATE ACROSS HEADER AND SIPS.



N.T.S.

**NOTES:**

1. ALL NAILING PER EPT-100S
2. FOAM EDGE OF SIPS WILL BE RECESSED AT FACTORY TO RECEIVE LUMBER PER SIP SHOP DRAWINGS.
3. FUR OUT EACH SIDE OF HEADER AFTER INSTALLATION.



Rev: 9/19/2022

**EPT-407**

**HEADER AT TOP OF SIP WALL  
ASSEMBLY SEQUENCE**

