

NOTE:
 THE USE OF A CAP PLATE DOES NOT ALLOW FOR INCREASED BEAM POINT LOADS IN THIS APPLICATION. SEE TECHNICAL BULLETIN D-3 FOR MORE INFORMATION.

BEAM BEARING REQUIRED ON BOTH SIP FACINGS. INSTALL 2x NAILERS ON BOTTOM AND EACH SIDE SO THAT BEAM EXTENDS BEYOND NAILERS THE THICKNESS OF SIP FACING.

RECESS EPS TO RECEIVE BEAM NAILERS

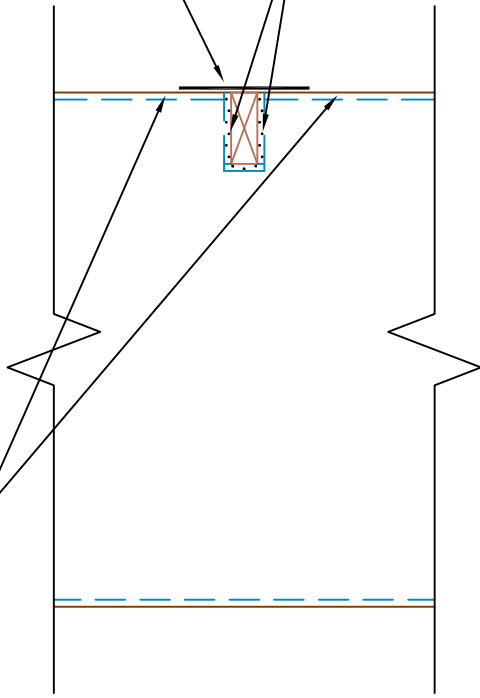
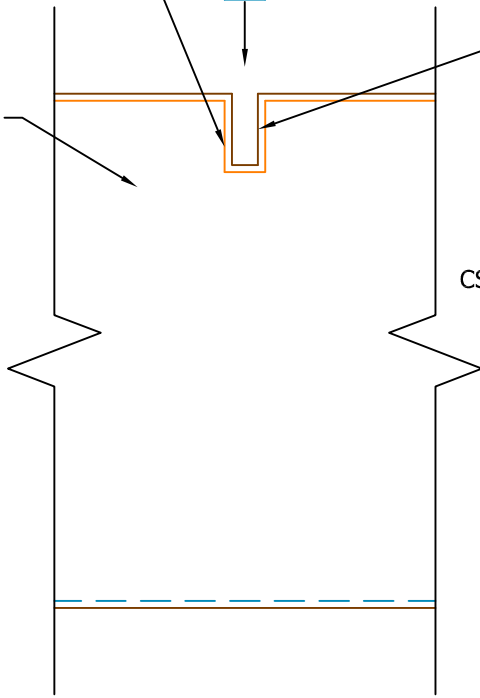
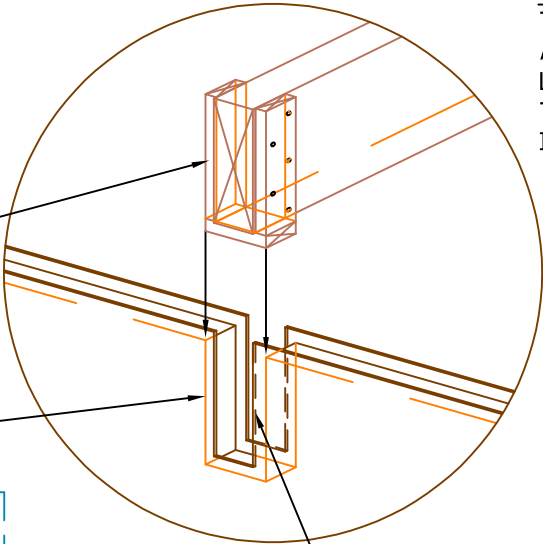
FIELD CUT BEAM POCKET INTO BOTH FACES OF SIP.

SIP WALL

CS 16X24" OR LSTA24 STRAP ACROSS TOP OF BEAM

NAIL SIP FACING TO 2x NAILERS ON BOTTOM AND BOTH SIDES OF SIP PER EPT-100S U.N.O.

2x TOP PLATES BUTT INTO NAILERS



N.T.S.

Rev: 9/19/2022

EPT-415

SIP BEAM POCKET AT TOP OF WALL
 WITHOUT POST

