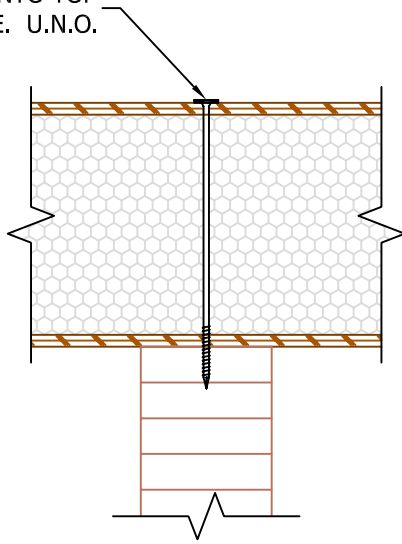


OPTION A:

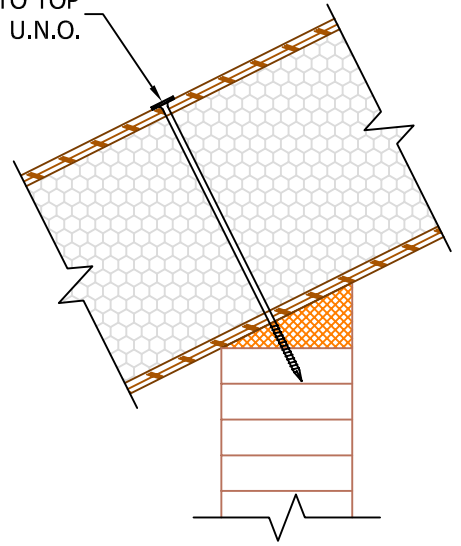
SIP SCREWS W/WASHER
PER EPT-100D W/ 1" MIN
PENETRATION INTO TOP
PLATE. U.N.O.



STRUCTURAL SUPPORT TO PROVIDE 1 1/2" MIN.
BEARING FOR SIP

OPTION B:

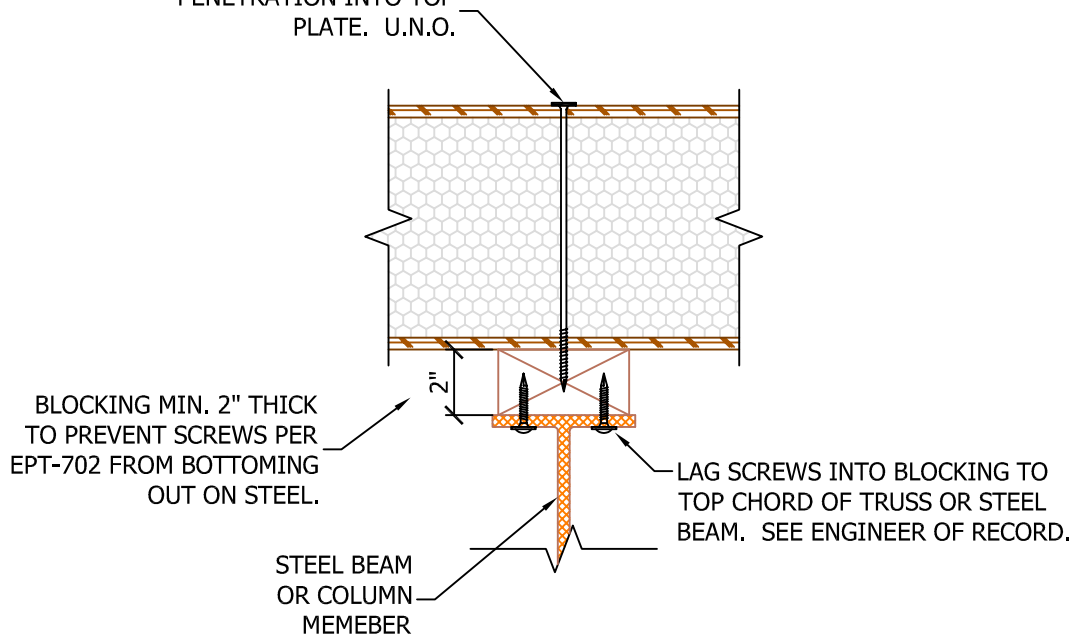
SIP SCREWS W/WASHER
PER EPT-100D W/ 1" MIN
PENETRATION INTO TOP
PLATE. U.N.O.



STRUCTURAL SUPPORT TO PROVIDE 1 1/2" MIN.
BEARING FOR SIP

OPTION C:

SIP SCREWS W/WASHER
PER EPT-100D W/ 1" MIN
PENETRATION INTO TOP
PLATE. U.N.O.



STRUCTURAL SUPPORT TO PROVIDE 1 1/2" MIN.
BEARING FOR SIP

N.T.S.

Rev: 12/10/2021

EPT-600A-C

SIP BEARING CONDITIONS
CONTINUOUS SIP

