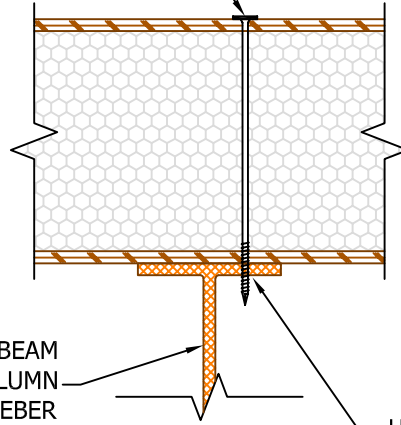


OPTION D:

SIP SCREWS W/WASHER
PER EPT-100D W/ FULL
THREAD PENETRATION
INTO STEEL. U.N.O.



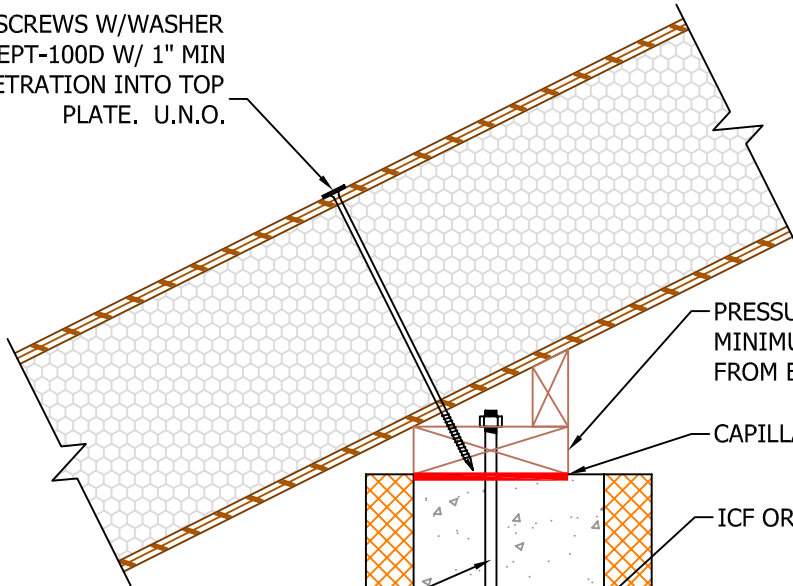
STEEL BEAM
OR COLUMN
MEMEBER

USE SELF TAPPING SIP SCREWS.
REFERENCE TECHNICAL BULLETIN D-15

STRUCTURAL SUPPORT TO PROVIDE 1 1/2" MIN.
BEARING FOR SIP

OPTION E:

SIP SCREWS W/WASHER
PER EPT-100D W/ 1" MIN
PENETRATION INTO TOP
PLATE. U.N.O.



PRESSURE TREATED TOP PLATE
MINIMUM 2" THICK TO PREVENT SCREWS
FROM BOTTOMING OUT ON CONCRETE.

CAPILLARY BREAK MATERIAL

ICF OR CONCRETE WALL

ANCHOR BOLTS AS
REQUIRED BY CODE U.N.O.
IN SHEAR WALL SCHEDULE.

STRUCTURAL SUPPORT TO PROVIDE 1 1/2" MIN.
BEARING FOR SIP

N.T.S.

Rev: 9/19/2022

EPT-600D-E

SIP BEARING CONDITIONS
CONTINUOUS SIP

