

SIP SCREWS W/WASHER  
PER EPT-100D W/ 1" MIN  
PENETRATION INTO  
STRUCTURAL SUPPORT  
U.N.O.

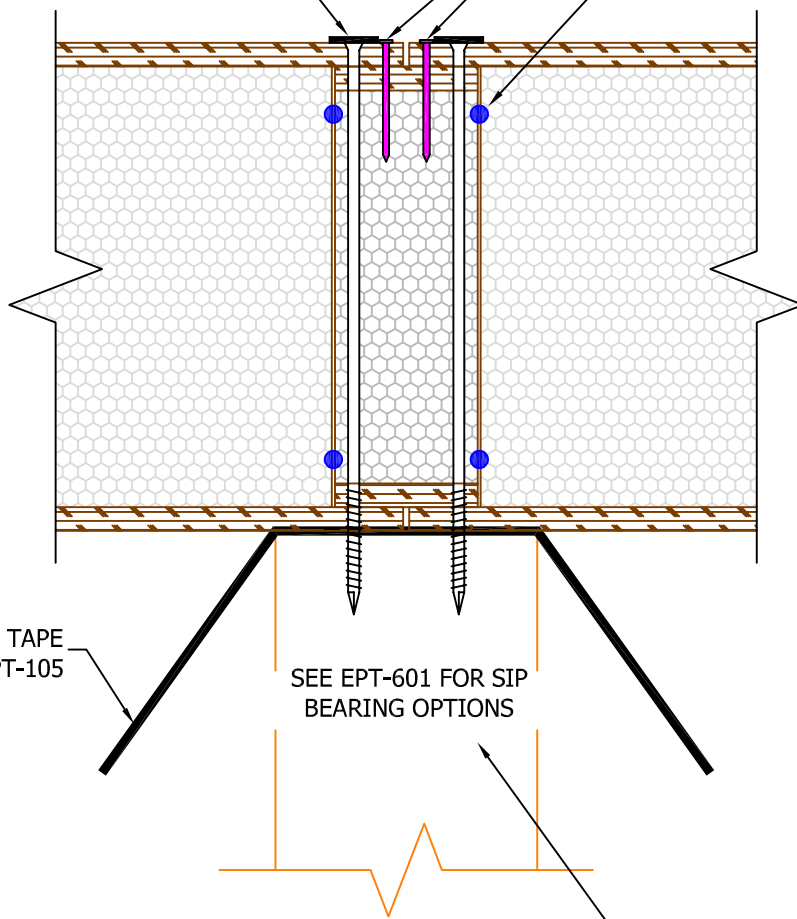
NAILS PER EPT-100D.  
U.N.O.

3/8"φ SEALANT PER  
EPT-104

18" SIP TAPE  
PER EPT-105

SEE EPT-601 FOR SIP  
BEARING OPTIONS

STRUCTURAL SUPPORT  
MIN. 3" WIDE TO PROVIDE  
1 1/2" MIN. BEARING ON  
EACH SIDE OF SIP JOINT



N.T.S.

Rev: 7/18/2022

EPT -703

BOX/BLOCK SPLINE ABOVE BEARING

